

Datasheet for ABIN7249034  
**anti-beta Amyloid antibody**

## 2 Images

[Go to Product page](#)

## Overview

Quantity:	200 µL
Target:	beta Amyloid (Abeta)
Reactivity:	Human, Mouse, Rat
Host:	Rabbit
Clonality:	Polyclonal
Conjugate:	This beta Amyloid antibody is un-conjugated
Application:	Western Blotting (WB), ELISA, Immunohistochemistry (IHC)

## Product Details

Immunogen:	Synthetic peptide of human APP
Isotype:	IgG
Characteristics:	Polyclonal Antibody
Purification:	Affinity purification

## Target Details

Target:	beta Amyloid (Abeta)
Alternative Name:	beta Amyloid ( <a href="#">Abeta Products</a> )
Background:	This gene encodes a cell surface receptor and transmembrane precursor protein that is cleaved by secretases to form a number of peptides. Some of these peptides are secreted and can bind to the acetyltransferase complex APBB1/TIP60 to promote transcriptional activation, while others form the protein basis of the amyloid plaques found in the brains of patients with

## Target Details

Alzheimer disease. Mutations in this gene have been implicated in autosomal dominant Alzheimer disease and cerebroarterial amyloidosis (cerebral amyloid angiopathy). Multiple transcript variants encoding several different isoforms have been found for this gene.

Molecular Weight: 87 kDa

NCBI Accession: [NP\\_000475](#)

UniProt: [P05067](#)

Pathways: [Inflammasome](#)

## Application Details

Application Notes: WB 1:1000-1:5000, IHC 1:50-1:200

Restrictions: For Research Use only

## Handling

Format: Liquid

Concentration: 0.7 mg/mL

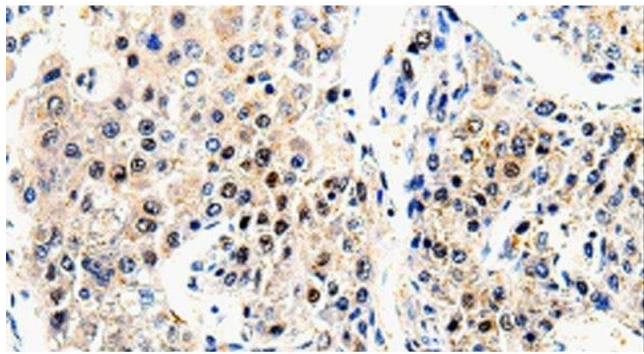
Buffer: PBS with 0.05 % sodium azide and 50 % glycerol, PH7.4

Preservative: Sodium azide

Precaution of Use: This product contains Sodium azide: a POISONOUS AND HAZARDOUS SUBSTANCE which should be handled by trained staff only.

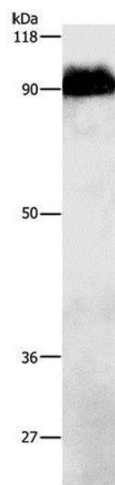
Storage: -20 °C

Storage Comment: Store at -20°C. Avoid freeze / thaw cycles.



#### Immunohistochemistry (Paraffin-embedded Sections)

**Image 1.** Immunohistochemistry of paraffin-embedded Human liver cancer using beta Amyloid Polyclonal Antibody at dilution of 1:100



#### Western Blotting

**Image 2.** Western Blot analysis of Mouse brain tissue using beta Amyloid Polyclonal Antibody at dilution of 1:1000