

Datasheet for ABIN7249049

anti-NCR1 antibody

1 Image



[Go to Product page](#)

Overview

Quantity:	200 µL
Target:	NCR1
Reactivity:	Human
Host:	Rabbit
Clonality:	Polyclonal
Conjugate:	This NCR1 antibody is un-conjugated
Application:	Western Blotting (WB), ELISA

Product Details

Immunogen:	Synthetic peptide of human NCR1
Isotype:	IgG
Characteristics:	Polyclonal Antibody
Purification:	Affinity purification

Target Details

Target:	NCR1
Alternative Name:	NCR1 (NCR1 Products)
Background:	Natural cytotoxicity triggering receptor 1 is a protein that in humans is encoded by the NCR1 gene. NCR1 has also been designated as CD335 (cluster of differentiation 335). Cytotoxicity-activating receptor that may contribute to the increased efficiency of activated natural killer (NK) cells to mediate tumor cell lysis. Interacts with CD247 and FCER1G. Selectively expressed by both

Target Details

resting and activated NK cells.

Molecular Weight: 34 kDa

NCBI Accession: [NP_001138929](#)

UniProt: [O76036](#)

Pathways: [Regulation of Leukocyte Mediated Immunity](#)

Application Details

Application Notes: WB 1:200-1:1000

Restrictions: For Research Use only

Handling

Format: Liquid

Concentration: 0.6 mg/mL

Buffer: PBS with 0.05 % sodium azide and 50 % glycerol, PH7.4

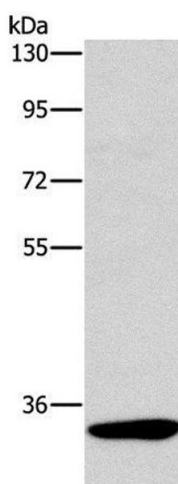
Preservative: Sodium azide

Precaution of Use: This product contains Sodium azide: a POISONOUS AND HAZARDOUS SUBSTANCE which should be handled by trained staff only.

Storage: -20 °C

Storage Comment: Store at -20°C. Avoid freeze / thaw cycles.

Images



Western Blotting

Image 1. Western Blot analysis of Mouse kidney tissue using NCR1 Polyclonal Antibody at dilution of 1:450