

Datasheet for ABIN7249058  
**anti-MAP3K11 antibody**

## 3 Images

[Go to Product page](#)

## Overview

Quantity:	200 µL
Target:	MAP3K11
Reactivity:	Human, Mouse, Rat
Host:	Rabbit
Clonality:	Polyclonal
Conjugate:	This MAP3K11 antibody is un-conjugated
Application:	ELISA, Western Blotting (WB), Immunohistochemistry (IHC)

## Product Details

Immunogen:	Synthetic peptide of human MAP3K11
Isotype:	IgG
Characteristics:	Polyclonal Antibody
Purification:	Affinity purification

## Target Details

Target:	MAP3K11
Alternative Name:	MAP3K11 ( <a href="#">MAP3K11 Products</a> )
Background:	<p>The protein encoded by this gene is a member of the serine/threonine kinase family. This kinase contains a SH3 domain and a leucine zipper-basic motif. This kinase preferentially activates MAPK8/JNK kinase, and functions as a positive regulator of JNK signaling pathway.</p> <p>This kinase can directly phosphorylate, and activates IkappaB kinase alpha and beta, and is</p>

## Target Details

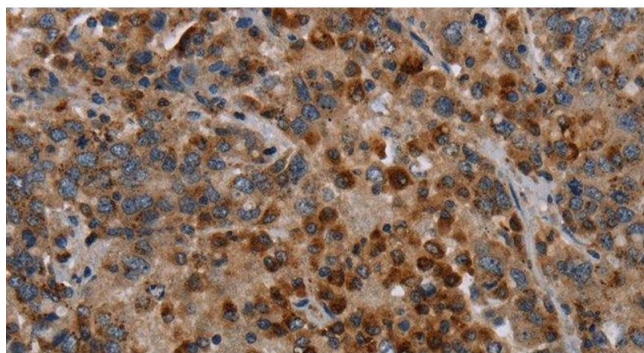
	found to be involved in the transcription activity of NF-kappaB mediated by Rho family GTPases and CDC42.
Molecular Weight:	93 kDa
NCBI Accession:	<a href="#">NP_002410</a>
UniProt:	<a href="#">Q16584</a>
Pathways:	<a href="#">MAPK Signaling</a> , <a href="#">Interferon-gamma Pathway</a>

## Application Details

Application Notes:	WB 1:500-1:2000, IHC 1:50-1:200
Restrictions:	For Research Use only

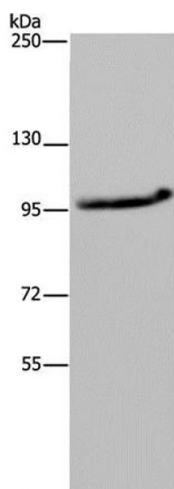
## Handling

Format:	Liquid
Concentration:	0.9 mg/mL
Buffer:	PBS with 0.05 % sodium azide and 50 % glycerol, PH7.4
Preservative:	Sodium azide
Precaution of Use:	This product contains Sodium azide: a POISONOUS AND HAZARDOUS SUBSTANCE which should be handled by trained staff only.
Storage:	-20 °C
Storage Comment:	Store at -20°C. Avoid freeze / thaw cycles.



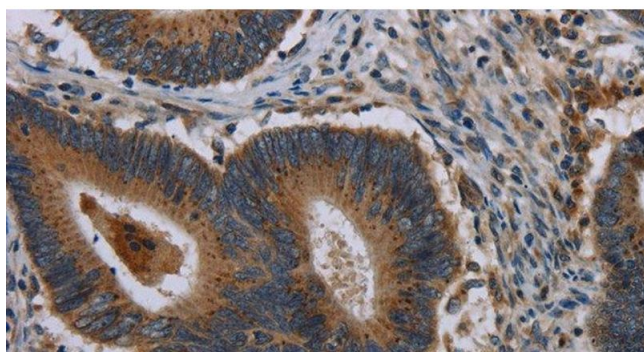
#### Immunohistochemistry (Paraffin-embedded Sections)

**Image 1.** Immunohistochemistry of paraffin-embedded Human liver cancer using MAP3K11 Polyclonal Antibody at dilution of 1:40



#### Western Blotting

**Image 2.** Western Blot analysis of LO2 cell using MAP3K11 Polyclonal Antibody at dilution of 1:400



#### Immunohistochemistry (Paraffin-embedded Sections)

**Image 3.** Immunohistochemistry of paraffin-embedded Human colon cancer using MAP3K11 Polyclonal Antibody at dilution of 1:40