

Datasheet for ABIN7249079

**anti-KCNMB1 antibody**[Go to Product page](#)**1** Image

## Overview

Quantity:	200 µL
Target:	KCNMB1
Reactivity:	Human, Mouse
Host:	Rabbit
Clonality:	Polyclonal
Conjugate:	This KCNMB1 antibody is un-conjugated
Application:	ELISA, Western Blotting (WB)

## Product Details

Immunogen:	Synthetic peptide of human KCNMB1
Isotype:	IgG
Characteristics:	Polyclonal Antibody
Purification:	Affinity purification

## Target Details

Target:	KCNMB1
Alternative Name:	KCNMB1 ( <a href="#">KCNMB1 Products</a> )
Background:	MaxiK channels are large conductance, voltage and calcium-sensitive potassium channels which are fundamental to the control of smooth muscle tone and neuronal excitability. MaxiK channels can be formed by 2 subunits: the pore-forming alpha subunit and the product of this gene, the modulatory beta subunit. Intracellular calcium regulates the

## Target Details

	physical association between the alpha and beta subunits.
Molecular Weight:	22 kDa
NCBI Accession:	<a href="#">NP_004128</a>
UniProt:	<a href="#">Q16558</a>

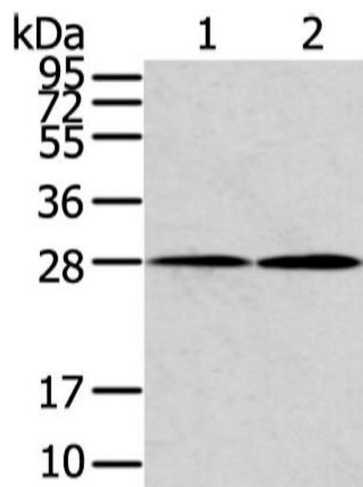
## Application Details

Application Notes:	WB 1:200-1000, ELISA 1:1000-2000
Restrictions:	For Research Use only

## Handling

Format:	Liquid
Concentration:	1 mg/mL
Buffer:	PBS with 0.05 % sodium azide and 50 % glycerol, PH7.4
Preservative:	Sodium azide
Precaution of Use:	This product contains Sodium azide: a POISONOUS AND HAZARDOUS SUBSTANCE which should be handled by trained staff only.
Storage:	-20 °C
Storage Comment:	Store at -20°C. Avoid freeze / thaw cycles.

## Images



### Western Blotting

**Image 1.** Western Blot analysis of Mouse heart and lung tissue using KCNMB1 Polyclonal Antibody at dilution of 1/500