



[Go to Product page](#)

Datasheet for ABIN7249082 anti-Podoplanin antibody

2 Images

Overview

Quantity:	200 µL
Target:	Podoplanin (PDPN)
Reactivity:	Human
Host:	Rabbit
Clonality:	Polyclonal
Conjugate:	This Podoplanin antibody is un-conjugated
Application:	Western Blotting (WB), Immunohistochemistry (IHC), ELISA

Product Details

Immunogen:	Synthetic peptide of human PDPN
Isotype:	IgG
Characteristics:	Polyclonal Antibody
Purification:	Affinity purification

Target Details

Target:	Podoplanin (PDPN)
Alternative Name:	PDPN (PDPN Products)
Background:	<p>This gene encodes a type-I integral membrane glycoprotein with diverse distribution in human tissues. The physiological function of this protein may be related to its mucin-type character.</p> <p>The homologous protein in other species has been described as a differentiation antigen and influenza-virus receptor. The specific function of this protein has not been determined but it has</p>

Target Details

been proposed as a marker of lung injury. Alternatively spliced transcript variants encoding different isoforms have been identified.

Molecular Weight: 17 kDa, 25 kDa

NCBI Accession: [NP_006465](#)

UniProt: [Q86YL7](#)

Pathways: [Dicarboxylic Acid Transport](#)

Application Details

Application Notes: WB 1:200-1000, IHC 1:10-50, ELISA 1:1000-2000

Restrictions: For Research Use only

Handling

Format: Liquid

Concentration: 0.3 mg/mL

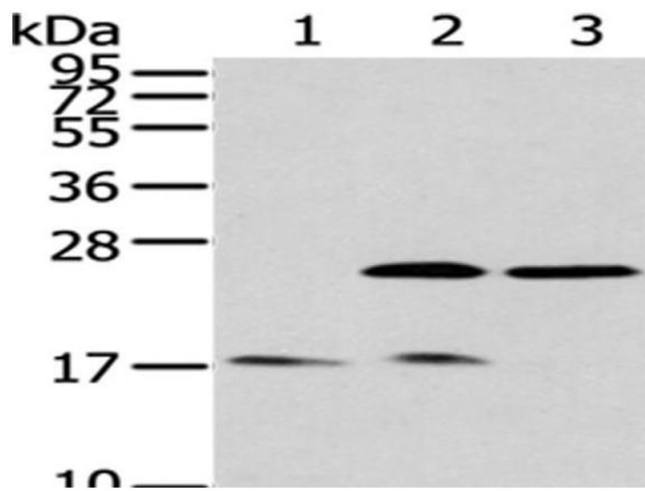
Buffer: PBS with 0.05 % sodium azide and 50 % glycerol, PH7.4

Preservative: Sodium azide

Precaution of Use: This product contains Sodium azide: a POISONOUS AND HAZARDOUS SUBSTANCE which should be handled by trained staff only.

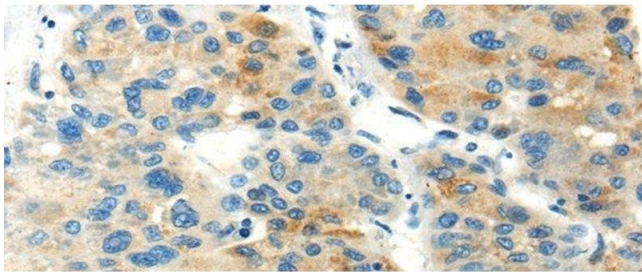
Storage: -20 °C

Storage Comment: Store at -20°C. Avoid freeze / thaw cycles.



Western Blotting

Image 1. Western Blot analysis of Human fetal brain tissue, HeLa and 293T cells using PDPN Polyclonal Antibody at dilution of 1/200



Immunohistochemistry (Paraffin-embedded Sections)

Image 2. Immunohistochemistry of paraffin-embedded Human liver cancer using PDPN Polyclonal Antibody at dilution of 1/20