

Datasheet for ABIN7249085

anti-CBX7 antibody

2 Images



[Go to Product page](#)

Overview

Quantity:	200 µL
Target:	CBX7
Reactivity:	Human, Rat, Mouse
Host:	Rabbit
Clonality:	Polyclonal
Conjugate:	This CBX7 antibody is un-conjugated
Application:	Western Blotting (WB), ELISA, Immunohistochemistry (IHC)

Product Details

Immunogen:	Synthetic peptide of human CBX7
Isotype:	IgG
Characteristics:	Polyclonal Antibody
Purification:	Affinity purification

Target Details

Target:	CBX7
Alternative Name:	CBX7 (CBX7 Products)
Background:	CBX7 (Chromobox protein homolog 7) is a 251 amino acid nuclear protein that contains one N-terminal chromo domain and one C-terminal Pc box. Highly expressed in kidney, brain, heart and skeletal muscle, with weaker expression in peripheral blood leukocytes, CBX7 functions as a component of the chromatin-associated polycomb complex (PcG) and is involved in

Target Details

maintaining the transcriptionally repressed state of target genes.

Molecular Weight: 28 kDa

NCBI Accession: [NP_783640](#)

UniProt: [O95931](#)

Application Details

Application Notes: WB 1:500-2000, IHC 1:20-100, ELISA 1:2000-5000

Restrictions: For Research Use only

Handling

Format: Liquid

Concentration: 0.3 mg/mL

Buffer: PBS with 0.05 % sodium azide and 50 % glycerol, PH7.4

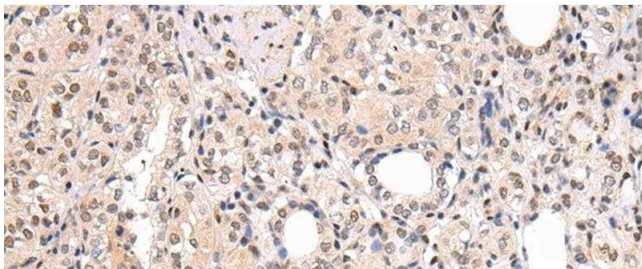
Preservative: Sodium azide

Precaution of Use: This product contains Sodium azide: a POISONOUS AND HAZARDOUS SUBSTANCE which should be handled by trained staff only.

Storage: -20 °C

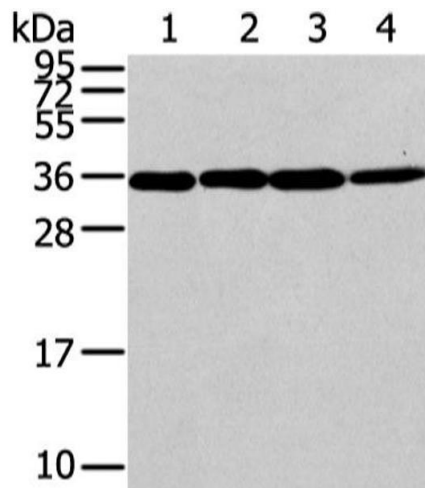
Storage Comment: Store at -20°C. Avoid freeze / thaw cycles.

Images



Immunohistochemistry (Paraffin-embedded Sections)

Image 1. Immunohistochemistry of paraffin-embedded Human thyroid cancer using CBX7 Polyclonal Antibody at dilution of 1/20



Western Blotting

Image 2. Western Blot analysis of Lovo, 293T, Jurkat and hela cell using CBX7 Polyclonal Antibody at dilution of 1/200