



## Datasheet for ABIN7249124 anti-ZUFSP antibody



[Go to Product page](#)

### 3 Images

#### Overview

Quantity:	200 µL
Target:	ZUFSP
Reactivity:	Human, Mouse, Rat
Host:	Rabbit
Clonality:	Polyclonal
Conjugate:	This ZUFSP antibody is un-conjugated
Application:	Western Blotting (WB), ELISA, Immunohistochemistry (IHC)

#### Product Details

Immunogen:	Fusion protein of human ZUFSP
Isotype:	IgG
Characteristics:	Polyclonal Antibody
Purification:	Antigen affinity purification

#### Target Details

Target:	ZUFSP
Alternative Name:	ZUFSP ( <a href="#">ZUFSP Products</a> )
Background:	Making up nearly 6 % of the human genome, chromosome 6 contains around 1,200 genes within 170 million base pairs of sequence. Deletion of a portion of the q arm of chromosome 6 is associated with early onset intestinal cancer suggesting the presence of a cancer susceptibility locus. Porphyria cutanea tarda is associated with chromosome 6 through the

## Target Details

---

HFE gene which, when mutated, predisposes an individual to developing this porphyria. Notably, the PARK2 gene, which is associated with Parkinson's disease, and the genes encoding the major histocompatibility complex proteins, which are key molecular components of the immune system and determine predisposition to rheumatic diseases, are also located on chromosome 6. Stickler syndrome, 21-hydroxylase deficiency and maple syrup urine disease are also associated with genes on chromosome 6. A bipolar disorder susceptibility locus has been identified on the q arm of chromosome 6.

---

Molecular Weight: Observed\_MW: Refer to figures  
Calculated\_MW: 66 kDa

---

UniProt: [Q96AP4](#)

## Application Details

---

Application Notes: WB 1:500-1:2000, IHC 1:25-1:100, ELISA 1:5000-1:10000

---

Restrictions: For Research Use only

## Handling

---

Format: Liquid

---

Concentration: 0.7 mg/mL

---

Buffer: PBS with 0.05 % Sodium azide and 40 % Glycerol, pH 7.4

---

Preservative: Sodium azide

---

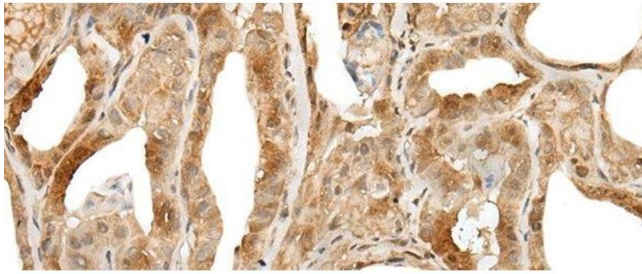
Precaution of Use: This product contains Sodium azide: a POISONOUS AND HAZARDOUS SUBSTANCE which should be handled by trained staff only.

---

Storage: -20 °C

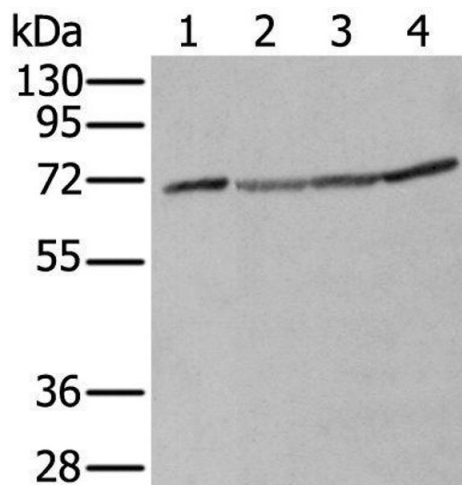
---

Storage Comment: Store at -20°C. Avoid freeze / thaw cycles.



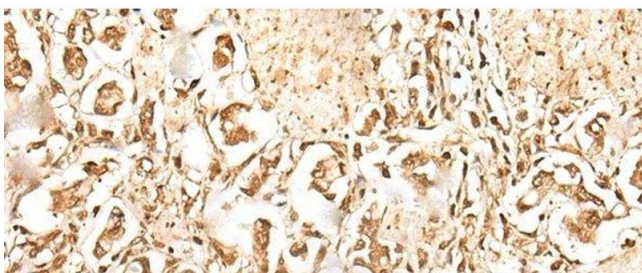
#### Immunohistochemistry (Paraffin-embedded Sections)

**Image 1.** Immunohistochemistry of paraffin-embedded Human thyroid cancer tissue using ZUFSP Polyclonal Antibody at dilution of 1:35(x200)



#### Western Blotting

**Image 2.** Western blot analysis of A172 HeLa Hepg2 and K562 cell lysates using ZUFSP Polyclonal Antibody at dilution of 1:300



#### Immunohistochemistry (Paraffin-embedded Sections)

**Image 3.** Immunohistochemistry of paraffin-embedded Human gastric cancer tissue using ZUFSP Polyclonal Antibody at dilution of 1:35(x200)