



[Go to Product page](#)

Datasheet for ABIN7249136

## anti-CHCHD3 antibody

### 3 Images

#### Overview

Quantity:	200 µL
Target:	CHCHD3
Reactivity:	Human, Mouse
Host:	Rabbit
Clonality:	Polyclonal
Conjugate:	This CHCHD3 antibody is un-conjugated
Application:	Western Blotting (WB), Immunohistochemistry (IHC), ELISA

#### Product Details

Immunogen:	Full length fusion protein
Isotype:	IgG
Characteristics:	Polyclonal Antibody
Purification:	Antigen affinity purification

#### Target Details

Target:	CHCHD3
Alternative Name:	CHCHD3 ( <a href="#">CHCHD3 Products</a> )
Background:	The protein encoded by this gene is an inner mitochondrial membrane scaffold protein. Absence of the encoded protein affects the structural integrity of mitochondrial cristae and leads to reductions in ATP production, cell growth, and oxygen consumption. This protein is part of the mitochondrial contact site and cristae organizing system (MICOS). Several transcript

## Target Details

variants encoding different isoforms have been found for this gene.

Molecular Weight: Observed\_MW: Refer to figures  
Calculated\_MW: 26 kDa

UniProt: [Q9NX63](#)

## Application Details

Application Notes: WB 1:1000-1:5000, IHC 1:30-1:150, ELISA 1:5000-1:10000

Restrictions: For Research Use only

## Handling

Format: Liquid

Concentration: 0.6 mg/mL

Buffer: PBS with 0.05 % Sodium azide and 40 % Glycerol, pH 7.4

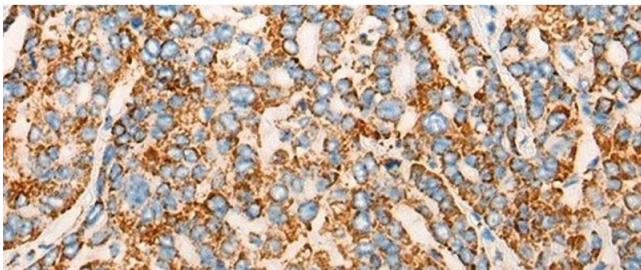
Preservative: Sodium azide

Precaution of Use: This product contains Sodium azide: a POISONOUS AND HAZARDOUS SUBSTANCE which should be handled by trained staff only.

Storage: -20 °C

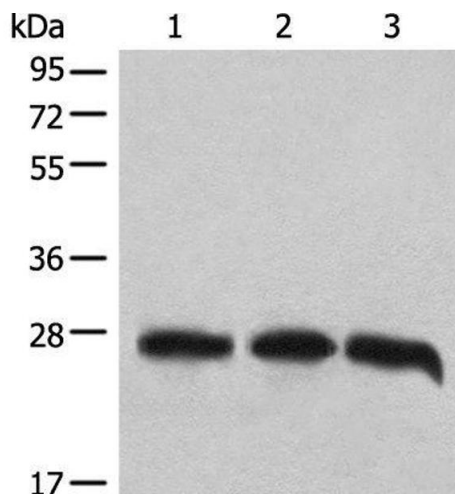
Storage Comment: Store at -20°C. Avoid freeze / thaw cycles.

## Images



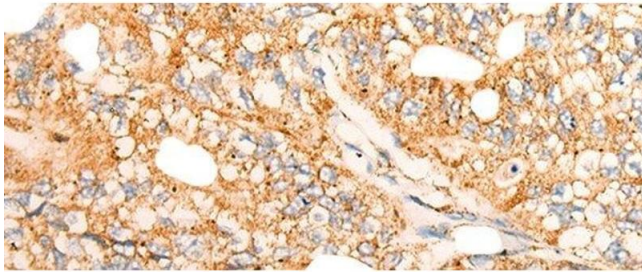
### Immunohistochemistry (Paraffin-embedded Sections)

**Image 1.** Immunohistochemistry of paraffin-embedded Human liver cancer tissue using CHCHD3 Polyclonal Antibody at dilution of 1:45(x200)



### Western Blotting

**Image 2.** Western blot analysis of 293T cell lysates using CHCHD3 Polyclonal Antibody at dilution of 1:1000



### Immunohistochemistry (Paraffin-embedded Sections)

**Image 3.** Immunohistochemistry of paraffin-embedded Human gastric cancer tissue using CHCHD3 Polyclonal Antibody at dilution of 1:45(x200)