



[Go to Product page](#)

Datasheet for ABIN7249148

## anti-LAMP3 antibody

### 3 Images

#### Overview

Quantity:	200 µL
Target:	LAMP3
Reactivity:	Human
Host:	Rabbit
Clonality:	Polyclonal
Conjugate:	This LAMP3 antibody is un-conjugated
Application:	Western Blotting (WB), Immunohistochemistry (IHC), ELISA

#### Product Details

Immunogen:	Synthetic peptide of human LAMP3
Isotype:	IgG
Characteristics:	Polyclonal Antibody
Purification:	Antigen affinity purification

#### Target Details

Target:	LAMP3
Alternative Name:	LAMP3 ( <a href="#">LAMP3 Products</a> )
Background:	Dendritic cells (DCs) are the most potent antigen-presenting cells. Immature DCs efficiently capture antigens and differentiate into interdigitating dendritic cells (IDCs) in lymphoid tissues that induce primary T-cell responses.

## Target Details

Molecular Weight: Observed\_MW: Refer to figures  
Calculated\_MW: 44 kDa

UniProt: [Q9UQV4](#)

## Application Details

Application Notes: WB 1:500-1:2000, IHC 1:25-1:50, ELISA 1:5000-1:10000

Restrictions: For Research Use only

## Handling

Format: Liquid

Concentration: 0.78 mg/mL

Buffer: PBS with 0.05 % Sodium azide and 40 % Glycerol, pH 7.4

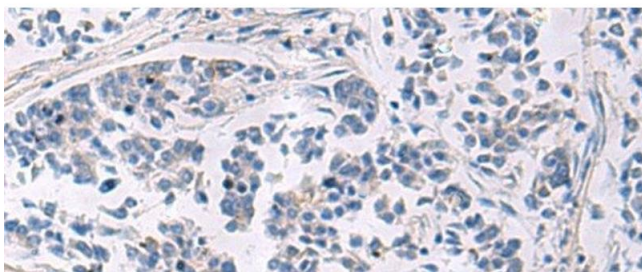
Preservative: Sodium azide

Precaution of Use: This product contains Sodium azide: a POISONOUS AND HAZARDOUS SUBSTANCE which should be handled by trained staff only.

Storage: -20 °C

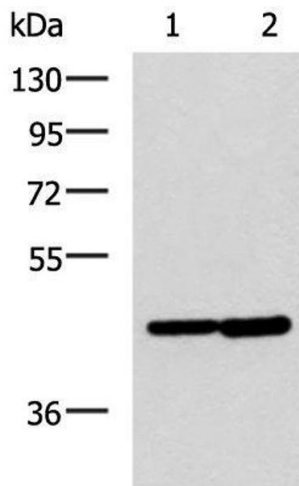
Storage Comment: Store at -20°C. Avoid freeze / thaw cycles.

## Images



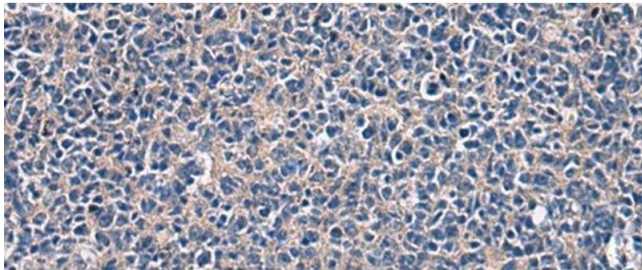
### Immunohistochemistry (Paraffin-embedded Sections)

**Image 1.** Immunohistochemistry of paraffin-embedded Human breast cancer tissue using LAMP3 Polyclonal Antibody at dilution of 1:30(x200)



### Western Blotting

**Image 2.** Western blot analysis of HeLa and Jurkat cell lysates using LAMP3 Polyclonal Antibody at dilution of 1:600



### Immunohistochemistry (Paraffin-embedded Sections)

**Image 3.** Immunohistochemistry of paraffin-embedded Human tonsil tissue using LAMP3 Polyclonal Antibody at dilution of 1:30(x200)