

Datasheet for ABIN7249175

**anti-ASB10 antibody**[Go to Product page](#)**1** Image

## Overview

Quantity:	200 µL
Target:	ASB10
Reactivity:	Human, Mouse
Host:	Rabbit
Clonality:	Polyclonal
Conjugate:	This ASB10 antibody is un-conjugated
Application:	ELISA, Western Blotting (WB)

## Product Details

Immunogen:	Fusion protein of human ASB10
Isotype:	IgG
Characteristics:	Polyclonal Antibody
Purification:	Antigen affinity purification

## Target Details

Target:	ASB10
Alternative Name:	ASB10 ( <a href="#">ASB10 Products</a> )
Background:	The protein encoded by this gene is a member of the ankyrin repeat and SOCS box-containing (ASB) family of proteins. The SOCS box serves to couple suppressor of cytokine signaling (SOCS) proteins and their binding partners with the elongin B and C complex, possibly targeting them for degradation. Multiple alternatively spliced transcript variants have been described for

## Target Details

	this gene.
Molecular Weight:	Observed_MW: Refer to figures Calculated_MW: 51 kDa
UniProt:	<a href="#">Q8WXI3</a>

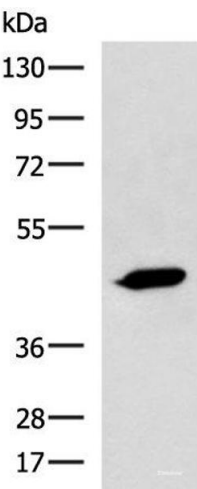
## Application Details

Application Notes:	WB 1:1000-1:5000, ELISA 1:5000-1:10000
Restrictions:	For Research Use only

## Handling

Format:	Liquid
Concentration:	0.96 mg/mL
Buffer:	PBS with 0.05 % Sodium azide and 40 % Glycerol, pH 7.4
Preservative:	Sodium azide
Precaution of Use:	This product contains Sodium azide: a POISONOUS AND HAZARDOUS SUBSTANCE which should be handled by trained staff only.
Storage:	-20 °C
Storage Comment:	Store at -20°C. Avoid freeze / thaw cycles.

## Images



**Western Blotting**

**Image 1.** Western blot analysis of A431 cell lysate using ASB10 Polyclonal Antibody at dilution of 1:800