



Datasheet for ABIN7249199

anti-GMFB antibody



[Go to Product page](#)

2 Images

Overview

Quantity:	200 µL
Target:	GMFB
Reactivity:	Human, Mouse, Rat
Host:	Rabbit
Clonality:	Polyclonal
Conjugate:	This GMFB antibody is un-conjugated
Application:	Western Blotting (WB), ELISA, Immunohistochemistry (IHC)

Product Details

Immunogen:	Fusion protein of human GMFB
Isotype:	IgG
Characteristics:	Polyclonal Antibody
Purification:	Antigen affinity purification

Target Details

Target:	GMFB
Alternative Name:	GMFB (GMFB Products)
Background:	GMFB, Glia maturation factor beta, is a nerve growth factor implicated in nervous system development. It was reported that GMF-beta promotes the phenotypic expression of glia and neurons and inhibits the proliferation of their respective tumors in culture cells. GMF-beta protein is specific to the brain where it is expressed in glial cells (mainly astrocytes) and in some

Target Details

neurons. Higher levels of GMFB were found in the central nervous system,except for the spinal cord,and in thymus and colon.

Molecular Weight: Observed_MW: Refer to figures
Calculated_MW: 17 kDa

UniProt: [P60983](#)

Application Details

Application Notes: WB 1:500-1:2000, IHC 1:10-1:50, ELISA 1:5000-1:10000

Restrictions: For Research Use only

Handling

Format: Liquid

Concentration: 0.9 mg/mL

Buffer: PBS with 0.05 % Sodium azide and 40 % Glycerol, pH 7.4

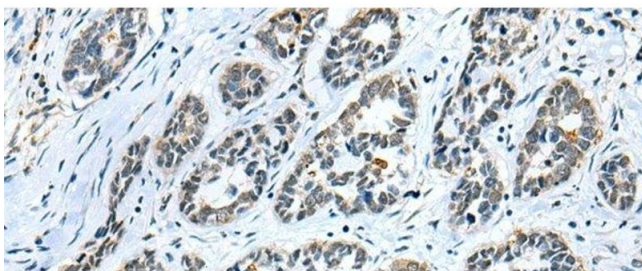
Preservative: Sodium azide

Precaution of Use: This product contains Sodium azide: a POISONOUS AND HAZARDOUS SUBSTANCE which should be handled by trained staff only.

Storage: -20 °C

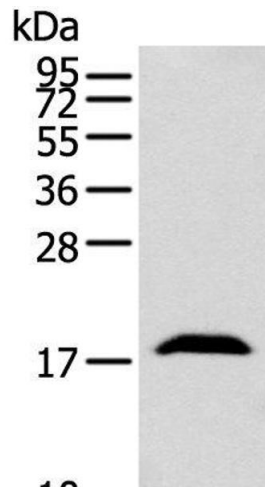
Storage Comment: Store at -20°C. Avoid freeze / thaw cycles.

Images



Immunohistochemistry (Paraffin-embedded Sections)

Image 1. Immunohistochemistry of paraffin-embedded Human esophagus cancer tissue using GMFB Polyclonal Antibody at dilution of 1:25(x200)



Western Blotting

Image 2. Western blot analysis of Mouse brain tissue using GMFB Polyclonal Antibody at dilution of 1:250