

Datasheet for ABIN7249214

**anti-ALKBH8 antibody**

3 Images

[Go to Product page](#)

## Overview

Quantity:	200 µL
Target:	ALKBH8
Reactivity:	Human
Host:	Rabbit
Clonality:	Polyclonal
Conjugate:	This ALKBH8 antibody is un-conjugated
Application:	Western Blotting (WB), Immunohistochemistry (IHC), ELISA

## Product Details

Immunogen:	Full length fusion protein
Isotype:	IgG
Characteristics:	Polyclonal Antibody
Purification:	Antigen affinity purification

## Target Details

Target:	ALKBH8
Alternative Name:	ALKBH8 ( <a href="#">ALKBH8 Products</a> )
Background:	ALKBH8 (alkylated DNA repair protein AlkB homolog 8) is a 664 amino acid protein that is encoded by a gene located on chromosome 11. ALKBH8 contains one RRM (RNA recognition motif) domain and belongs to the AlkB family of proteins. ALKBH8 is one of many homologs of the Escherichia coli protein AlkB. AlkB functions to protect DNA and RNA against damage from

## Target Details

environmental methylating compounds by directly reversing 1-methyladenine (1-meA) and 3-methylcytosine (3-meC) cytotoxic alkylation lesions in DNA and RNA. The enzyme acts by oxidative demethylation, utilizing ferrous iron and alpha-ketoglutarate as cofactors, 2-oxoglutarate as a co-substrate and molecular oxygen as the oxidizing agent. Three isoforms exist for ALKBH8 due alternative splicing of the gene.

Molecular Weight: Observed\_MW: Refer to figures  
Calculated\_MW: 75 kDa

UniProt: [Q96BT7](#)

## Application Details

Application Notes: WB 1:500-1:2000, IHC 1:25-1:100, ELISA 1:5000-1:10000

Restrictions: For Research Use only

## Handling

Format: Liquid

Concentration: 0.6 mg/mL

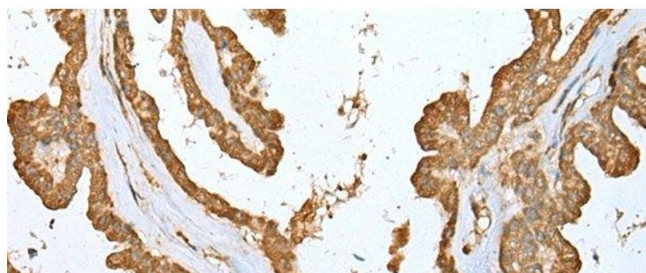
Buffer: PBS with 0.05 % Sodium azide and 40 % Glycerol, pH 7.4

Preservative: Sodium azide

Precaution of Use: This product contains Sodium azide: a POISONOUS AND HAZARDOUS SUBSTANCE which should be handled by trained staff only.

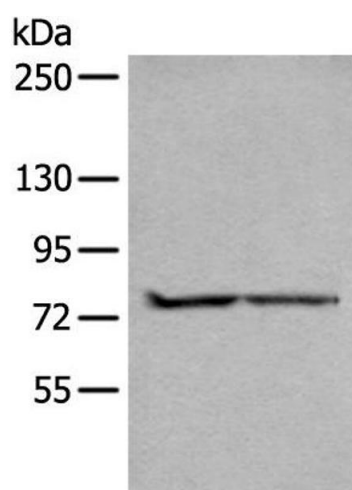
Storage: -20 °C

Storage Comment: Store at -20°C. Avoid freeze / thaw cycles.



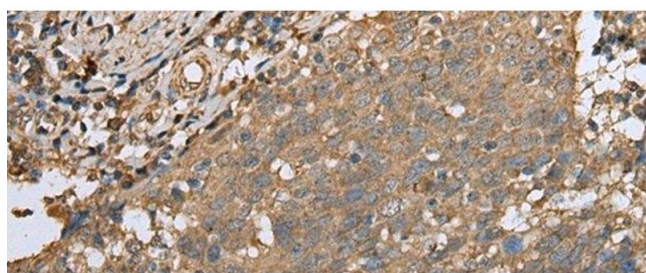
#### Immunohistochemistry (Paraffin-embedded Sections)

**Image 1.** Immunohistochemistry of paraffin-embedded Human thyroid cancer tissue using ALKBH8 Polyclonal Antibody at dilution of 1:25(x200)



#### Western Blotting

**Image 2.** Western blot analysis of A549 and Jurkat cell lysates using ALKBH8 Polyclonal Antibody at dilution of 1:300



#### Immunohistochemistry (Paraffin-embedded Sections)

**Image 3.** Immunohistochemistry of paraffin-embedded Human cervical cancer tissue using ALKBH8 Polyclonal Antibody at dilution of 1:25(x200)