



Datasheet for ABIN7249235

## anti-SMS antibody



[Go to Product page](#)

### 2 Images

#### Overview

Quantity:	200 µL
Target:	SMS
Reactivity:	Human, Mouse
Host:	Rabbit
Clonality:	Polyclonal
Conjugate:	This SMS antibody is un-conjugated
Application:	Western Blotting (WB), ELISA, Immunohistochemistry (IHC)

#### Product Details

Immunogen:	Fusion protein of human SMS
Isotype:	IgG
Characteristics:	Polyclonal Antibody
Purification:	Antigen affinity purification

#### Target Details

Target:	SMS
Alternative Name:	SMS ( <a href="#">SMS Products</a> )
Background:	<p>This gene encodes a protein belonging to the spermidine/spermin synthase family. Pseudogenes of this gene are located on chromosomes 1, 5, 6 and X. Mutations in this gene are associated with X-linked Snyder-Robinson mental retardation syndrome. Multiple transcript variants encoding different isoforms have been found for this gene.</p>

## Target Details

Molecular Weight: Observed\_MW: Refer to figures  
Calculated\_MW: 41 kDa

UniProt: [P52788](#)

## Application Details

Application Notes: WB 1:500-1:2000, IHC 1:30-1:150, ELISA 1:5000-1:10000

Restrictions: For Research Use only

## Handling

Format: Liquid

Concentration: 1.2 mg/mL

Buffer: PBS with 0.05 % Sodium azide and 40 % Glycerol, pH 7.4

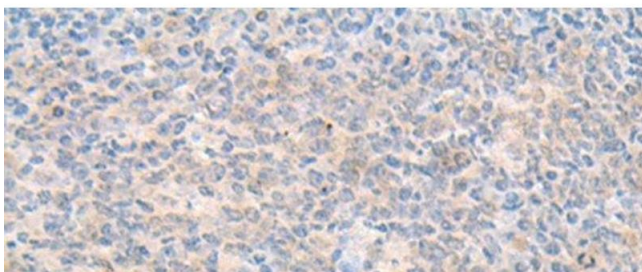
Preservative: Sodium azide

Precaution of Use: This product contains Sodium azide: a POISONOUS AND HAZARDOUS SUBSTANCE which should be handled by trained staff only.

Storage: -20 °C

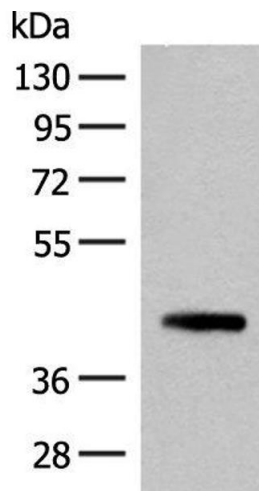
Storage Comment: Store at -20°C. Avoid freeze / thaw cycles.

## Images



### Immunohistochemistry (Paraffin-embedded Sections)

**Image 1.** Immunohistochemistry of paraffin-embedded Human tonsil tissue using SMS Polyclonal Antibody at dilution of 1:70(x200)



### Western Blotting

**Image 2.** Western blot analysis of 293T cell lysate using SMS Polyclonal Antibody at dilution of 1:500