

Datasheet for ABIN7249262

anti-ZWILCH antibody[Go to Product page](#)**1** Image

Overview

Quantity:	200 µL
Target:	ZWILCH
Reactivity:	Human, Mouse
Host:	Rabbit
Clonality:	Polyclonal
Conjugate:	This ZWILCH antibody is un-conjugated
Application:	Western Blotting (WB), ELISA

Product Details

Immunogen:	Synthetic peptide of human ZWILCH
Isotype:	IgG
Characteristics:	Polyclonal Antibody
Purification:	Antigen affinity purification

Target Details

Target:	ZWILCH
Alternative Name:	ZWILCH (ZWILCH Products)
Background:	This protein is essential component of the mitotic checkpoint, which prevents cells from prematurely exiting mitosis. And it is required for the assembly of the dynein-dynactin and MAD1-MAD2 complexes onto kinetochores. ZWILCH gene is deleted in a patient suffering from colorectal cancer with chromosomal instability.

Target Details

Molecular Weight: Observed_MW: Refer to figures
Calculated_MW: 67 kDa

UniProt: [Q9H900](#)

Application Details

Application Notes: WB 1:1000-1:5000, ELISA 1:2000-1:10000

Restrictions: For Research Use only

Handling

Format: Liquid

Concentration: 0.6 mg/mL

Buffer: PBS with 0.05 % Sodium azide and 40 % Glycerol, pH 7.4

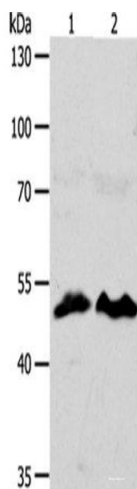
Preservative: Sodium azide

Precaution of Use: This product contains Sodium azide: a POISONOUS AND HAZARDOUS SUBSTANCE which should be handled by trained staff only.

Storage: -20 °C

Storage Comment: Store at -20°C. Avoid freeze / thaw cycles.

Images



Western Blotting

Image 1. Western blot analysis of HT29 cells hela cells using ZWILCH Polyclonal Antibody at dilution of 1:1750