

Datasheet for ABIN7249265

anti-WDR1 antibody**1** Image[Go to Product page](#)

Overview

Quantity:	200 µL
Target:	WDR1
Reactivity:	Human, Mouse, Rat
Host:	Rabbit
Clonality:	Polyclonal
Conjugate:	This WDR1 antibody is un-conjugated
Application:	Western Blotting (WB), ELISA

Product Details

Immunogen:	Synthetic peptide of human WDR1
Isotype:	IgG
Characteristics:	Polyclonal Antibody
Purification:	Antigen affinity purification

Target Details

Target:	WDR1
Alternative Name:	WDR1 (WDR1 Products)
Background:	This gene encodes a protein containing 9 WD repeats. WD repeats are approximately 30- to 40-amino acid domains containing several conserved residues, mostly including a trp-asn at the C-terminal end. WD domains are involved in protein-protein interactions. The encoded protein may help induce the disassembly of actin filaments. Two transcript variants encoding different

Target Details

isoforms have been found for this gene.

Molecular Weight: Observed_MW: Refer to figures
Calculated_MW: 66 kDa

UniProt: [O75083](#)

Pathways: [Sensory Perception of Sound](#)

Application Details

Application Notes: WB 1:500-1:2000, ELISA 1:1000-1:5000

Restrictions: For Research Use only

Handling

Format: Liquid

Concentration: 1.2 mg/mL

Buffer: PBS with 0.05 % Sodium azide and 40 % Glycerol, pH 7.4

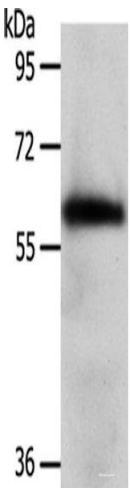
Preservative: Sodium azide

Precaution of Use: This product contains Sodium azide: a POISONOUS AND HAZARDOUS SUBSTANCE which should be handled by trained staff only.

Storage: -20 °C

Storage Comment: Store at -20°C. Avoid freeze / thaw cycles.

Images



Western Blotting

Image 1. Western blot analysis of Mouse brain tissue using WDR1 Polyclonal Antibody at dilution of 1:1000