

Datasheet for ABIN7249268

anti-WDR6 antibody**1** Image[Go to Product page](#)

Overview

Quantity:	200 µL
Target:	WDR6
Reactivity:	Human, Mouse, Rat
Host:	Rabbit
Clonality:	Polyclonal
Conjugate:	This WDR6 antibody is un-conjugated
Application:	Western Blotting (WB), ELISA

Product Details

Immunogen:	Synthetic peptide of human WDR6
Isotype:	IgG
Characteristics:	Polyclonal Antibody
Purification:	Antigen affinity purification

Target Details

Target:	WDR6
Alternative Name:	WDR6 (WDR6 Products)
Background:	This gene encodes a member of the WD repeat protein family. WD repeats are minimally conserved regions of approximately 40 amino acids typically bracketed by gly-his and trp-aspartate (GH-WD), which may facilitate formation of heterotrimeric or multiprotein complexes. The encoded protein interacts with serine/threonine kinase 11, and is implicated in cell growth

Target Details

	arrest.
Molecular Weight:	Observed_MW: Refer to figures Calculated_MW: 122 kDa
UniProt:	Q9NNW5

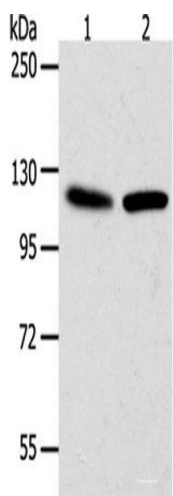
Application Details

Application Notes:	WB 1:500-1:2000, ELISA 1:1000-1:5000
Restrictions:	For Research Use only

Handling

Format:	Liquid
Concentration:	2 mg/mL
Buffer:	PBS with 0.05 % Sodium azide and 40 % Glycerol, pH 7.4
Preservative:	Sodium azide
Precaution of Use:	This product contains Sodium azide: a POISONOUS AND HAZARDOUS SUBSTANCE which should be handled by trained staff only.
Storage:	-20 °C
Storage Comment:	Store at -20°C. Avoid freeze / thaw cycles.

Images



Western Blotting

Image 1. Western blot analysis of Hela cells NIH/3T3 cells using WDR6 Polyclonal Antibody at dilution of 1:1000