



[Go to Product page](#)

Datasheet for ABIN7249316

anti-ZBTB6 antibody

1 Image

Overview

Quantity:	200 µL
Target:	ZBTB6
Reactivity:	Human, Mouse
Host:	Rabbit
Clonality:	Polyclonal
Conjugate:	This ZBTB6 antibody is un-conjugated
Application:	ELISA, Immunohistochemistry (IHC)

Product Details

Immunogen:	Synthetic peptide of human ZBTB6
Isotype:	IgG
Characteristics:	Polyclonal Antibody
Purification:	Antigen affinity purification

Target Details

Target:	ZBTB6
Alternative Name:	ZBTB6 (ZBTB6 Products)
Background:	The ZBTB6 protein contains a conserved N-terminal domain known as the POZ domain that inhibits DNA binding. Sequence analysis predicted that the 424-amino acid protein contains 4 C-terminal zinc finger motifs and an N-terminal domain of 120 amino acids found in many different zinc finger proteins and a group of non-zinc finger poxvirus proteins.

Target Details

UniProt: [Q15916](#)

Application Details

Application Notes: IHC 1:50-1:200, ELISA 1:2000-1:5000

Restrictions: For Research Use only

Handling

Format: Liquid

Concentration: 1 mg/mL

Buffer: PBS with 0.05 % Sodium azide and 40 % Glycerol, pH 7.4

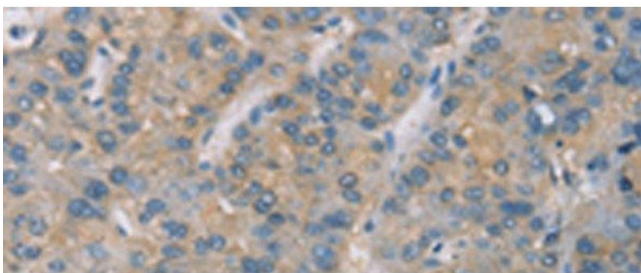
Preservative: Sodium azide

Precaution of Use: This product contains Sodium azide: a POISONOUS AND HAZARDOUS SUBSTANCE which should be handled by trained staff only.

Storage: -20 °C

Storage Comment: Store at -20°C. Avoid freeze / thaw cycles.

Images



Immunohistochemistry (Paraffin-embedded Sections)

Image 1. Immunohistochemistry of paraffin-embedded Human liver cancer tissue using ZBTB6 Polyclonal Antibody at dilution of 1:50(x200)