

Datasheet for ABIN7249322

anti-ZBTB7A antibody[Go to Product page](#)**1** Image

Overview

Quantity:	200 µL
Target:	ZBTB7A
Reactivity:	Human, Mouse, Rat
Host:	Rabbit
Clonality:	Polyclonal
Conjugate:	This ZBTB7A antibody is un-conjugated
Application:	Western Blotting (WB), ELISA

Product Details

Immunogen:	Synthetic peptide of human ZBTB7A
Isotype:	IgG
Characteristics:	Polyclonal Antibody
Purification:	Antigen affinity purification

Target Details

Target:	ZBTB7A
Alternative Name:	ZBTB7A (ZBTB7A Products)
Background:	LRF, formerly identified as Pokemon, is a poxvirus zinc finger (POZ) domain-containing transcription factor that influences cell differentiation. LRF (for leukemia/lymphoma related factor) is also known as zinc finger and BTB domain containing 7A, ZBTB7, TIP21, FBI1 and FBI-1. POZ-domain transcription factors contain a POZ or BTB type protein-protein interaction

Target Details

domain at their N-terminus and Kruppel-type zinc fingers at their C-terminus. LRF is inducible during both murine and human preadipocyte differentiation and may contribute to adipogenesis through influencing the switch from cellular proliferation to terminal differentiation.

Molecular Weight: Observed_MW: Refer to figures
Calculated_MW: 61 kDa

UniProt: [O95365](#)

Application Details

Application Notes: WB 1:500-1:2000, ELISA 1:2000-1:5000

Restrictions: For Research Use only

Handling

Format: Liquid

Concentration: 0.7 mg/mL

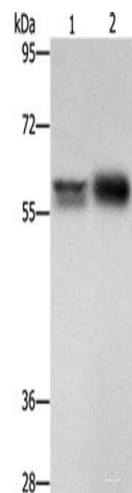
Buffer: PBS with 0.05 % Sodium azide and 40 % Glycerol, pH 7.4

Preservative: Sodium azide

Precaution of Use: This product contains Sodium azide: a POISONOUS AND HAZARDOUS SUBSTANCE which should be handled by trained staff only.

Storage: -20 °C

Storage Comment: Store at -20°C. Avoid freeze / thaw cycles.



Western Blotting

Image 1. Western blot analysis of Hepg2 cells NIH/3T3 cells using ZBTB7A Polyclonal Antibody at dilution of 1:500