

Datasheet for ABIN7249328

**anti-CREBZF antibody****2** Images[Go to Product page](#)

## Overview

Quantity:	200 µL
Target:	CREBZF
Reactivity:	Human, Mouse
Host:	Rabbit
Clonality:	Polyclonal
Conjugate:	This CREBZF antibody is un-conjugated
Application:	Western Blotting (WB), ELISA, Immunohistochemistry (IHC)

## Product Details

Immunogen:	Synthetic peptide of human CREBZF
Isotype:	IgG
Characteristics:	Polyclonal Antibody
Purification:	Antigen affinity purification

## Target Details

Target:	CREBZF
Alternative Name:	CREBZF ( <a href="#">CREBZF Products</a> )
Background:	Host cell factor (HCF) is a cellular cofactor required for the activation of VP16 which expresses the herpes simplex virus immediate early gene. V16 binds to HCF through a 4-amino acid motif similar to the HCF binding domain of the basic leucine-zipper proteins Luman and Zhangfei (ZF). Luman activates promoters containing cAMP or unfolded protein response elements

## Target Details

(UPRE). Zhangfei suppresses the transcriptional activity of Luman, but requires HCF binding which may target Luman and Zhangfei to a common location. Sequence analysis predicts that the deduced 272-amino acid Zhangfei protein has a negatively charged N terminus, a leucine zipper of 6 heptad leucine repeats separated by a conserved 6-amino acid spacer, a basic domain, and a bZIP region. It is also presumed that the N-terminal acidic region of Zhangfei is an activation domain.

Molecular Weight:	Observed_MW: Refer to figures Calculated_MW: 37 kDa
-------------------	--

UniProt:	<a href="#">Q9NS37</a>
----------	------------------------

## Application Details

Application Notes:	WB 1:500-1:2000, IHC 1:25-1:100, ELISA 1:2000-1:5000
--------------------	--

Restrictions:	For Research Use only
---------------	-----------------------

## Handling

Format:	Liquid
---------	--------

Concentration:	0.4 mg/mL
----------------	-----------

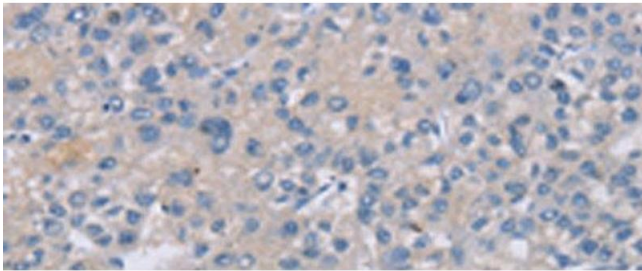
Buffer:	PBS with 0.05 % Sodium azide and 40 % Glycerol, pH 7.4
---------	--

Preservative:	Sodium azide
---------------	--------------

Precaution of Use:	This product contains Sodium azide: a POISONOUS AND HAZARDOUS SUBSTANCE which should be handled by trained staff only.
--------------------	--

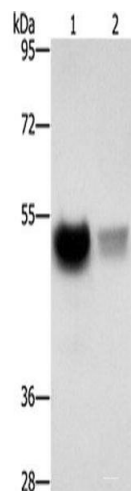
Storage:	-20 °C
----------	--------

Storage Comment:	Store at -20°C. Avoid freeze / thaw cycles.
------------------	---



Immunohistochemistry (Paraffin-embedded Sections)

**Image 1.** Immunohistochemistry of paraffin-embedded Human liver cancer tissue using CREBZF Polyclonal Antibody at dilution of 1:50(x200)



Western Blotting

**Image 2.** Western blot analysis of Mouse brain tissue PC3 cells using CREBZF Polyclonal Antibody at dilution of 1:500