

Datasheet for ABIN7249346

anti-ZIC2 antibody[Go to Product page](#)**1** Image

Overview

Quantity:	200 µL
Target:	ZIC2
Reactivity:	Human, Mouse
Host:	Rabbit
Clonality:	Polyclonal
Conjugate:	This ZIC2 antibody is un-conjugated
Application:	ELISA, Immunohistochemistry (IHC)

Product Details

Immunogen:	Synthetic peptide of human ZIC2
Isotype:	IgG
Characteristics:	Polyclonal Antibody
Purification:	Antigen affinity purification

Target Details

Target:	ZIC2
Alternative Name:	ZIC2 (ZIC2 Products)
Background:	<p>This gene encodes a member of the ZIC family of C2H2-type zinc finger proteins. This protein functions as a transcriptional repressor and may regulate tissue specific expression of dopamine receptor D1. Mutations in this gene cause holoprosencephaly type 5.</p> <p>Holoprosencephaly is the most common structural anomaly of the human brain. A polyhistidine</p>

Target Details

tract polymorphism in this gene may be associated with increased risk of neural tube defects.

This gene is closely linked to a gene encoding zinc finger protein of the cerebellum 5, a related family member on chromosome 13.

UniProt: [O95409](#)

Pathways: [Tube Formation](#)

Application Details

Application Notes: IHC 1:50-1:200, ELISA 1:2000-1:5000

Restrictions: For Research Use only

Handling

Format: Liquid

Concentration: 2 mg/mL

Buffer: PBS with 0.05 % Sodium azide and 40 % Glycerol, pH 7.4

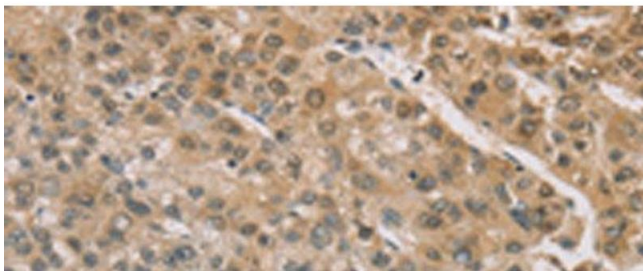
Preservative: Sodium azide

Precaution of Use: This product contains Sodium azide: a POISONOUS AND HAZARDOUS SUBSTANCE which should be handled by trained staff only.

Storage: -20 °C

Storage Comment: Store at -20°C. Avoid freeze / thaw cycles.

Images



Immunohistochemistry (Paraffin-embedded Sections)

Image 1. Immunohistochemistry of paraffin-embedded Human liver cancer tissue using ZIC2 Polyclonal Antibody at dilution of 1:100(x200)