

Datasheet for ABIN7249349

anti-ZIC5 antibody[Go to Product page](#)**1** Image

Overview

Quantity:	200 µL
Target:	ZIC5
Reactivity:	Human, Mouse
Host:	Rabbit
Clonality:	Polyclonal
Conjugate:	This ZIC5 antibody is un-conjugated
Application:	ELISA, Immunohistochemistry (IHC)

Product Details

Immunogen:	Synthetic peptide of human ZIC5
Isotype:	IgG
Characteristics:	Polyclonal Antibody
Purification:	Antigen affinity purification

Target Details

Target:	ZIC5
Alternative Name:	ZIC5 (ZIC5 Products)
Background:	This gene encodes a member of the ZIC family of C2H2-type zinc finger proteins. Members of this family are important during development, and have been associated X-linked visceral heterotaxy and holoprosencephaly type 5. This gene is closely linked to a gene encoding zinc finger protein of the cerebellum 2, a related family member on chromosome 13.

Target Details

UniProt: [Q96T25](#)

Pathways: [Tube Formation](#)

Application Details

Application Notes: IHC 1:100-1:300, ELISA 1:2000-1:5000

Restrictions: For Research Use only

Handling

Format: Liquid

Concentration: 0.9 mg/mL

Buffer: PBS with 0.05 % Sodium azide and 40 % Glycerol, pH 7.4

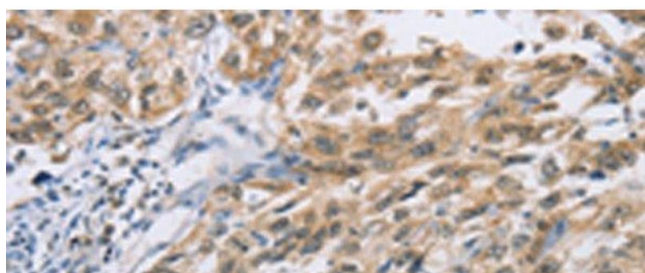
Preservative: Sodium azide

Precaution of Use: This product contains Sodium azide: a POISONOUS AND HAZARDOUS SUBSTANCE which should be handled by trained staff only.

Storage: -20 °C

Storage Comment: Store at -20°C. Avoid freeze / thaw cycles.

Images



Immunohistochemistry (Paraffin-embedded Sections)

Image 1. Immunohistochemistry of paraffin-embedded Human esophagus cancer tissue using ZIC5 Polyclonal Antibody at dilution of 1:100(x200)