

Datasheet for ABIN7249367

anti-CHRNA2 antibody[Go to Product page](#)**1** Image

Overview

Quantity:	200 µL
Target:	CHRNA2
Reactivity:	Human, Mouse, Rat
Host:	Rabbit
Clonality:	Polyclonal
Conjugate:	This CHRNA2 antibody is un-conjugated
Application:	ELISA, Immunohistochemistry (IHC)

Product Details

Immunogen:	Synthetic peptide of human CHRNA2
Isotype:	IgG
Characteristics:	Polyclonal Antibody
Purification:	Antigen affinity purification

Target Details

Target:	CHRNA2
Alternative Name:	CHRNA2 (CHRNA2 Products)
Background:	Neuronal acetylcholine receptors are homo- or heteropentameric complexes composed of homologous alpha and beta subunits. They belong to a superfamily of ligand-gated ion channels which allow the flow of sodium and potassium across the plasma membrane in response to ligands such as acetylcholine and nicotine. This gene encodes one of several beta

Target Details

subunits. Mutations in this gene are associated with autosomal dominant nocturnal frontal lobe epilepsy.

UniProt: [P17787](#)

Pathways: [Sensory Perception of Sound](#), [Feeding Behaviour](#)

Application Details

Application Notes: IHC 1:40-1:250, ELISA 1:500-1000

Restrictions: For Research Use only

Handling

Format: Liquid

Concentration: 0.7 mg/mL

Buffer: PBS with 0.05 % Sodium azide and 40 % Glycerol, pH 7.4

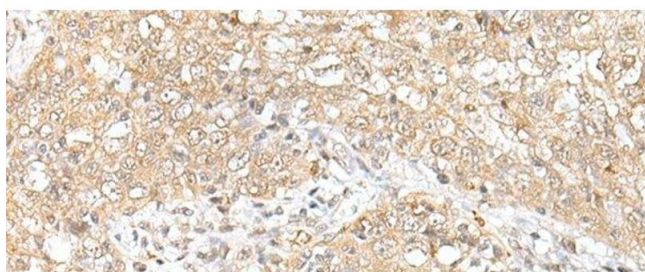
Preservative: Sodium azide

Precaution of Use: This product contains Sodium azide: a POISONOUS AND HAZARDOUS SUBSTANCE which should be handled by trained staff only.

Storage: -20 °C

Storage Comment: Store at -20°C. Avoid freeze / thaw cycles.

Images



Immunohistochemistry (Paraffin-embedded Sections)

Image 1. Immunohistochemistry of paraffin-embedded Human esophagus cancer tissue using CHRNA2 Polyclonal Antibody at dilution of 1:50(x200)