



[Go to Product page](#)

Datasheet for ABIN7249380
anti-beta Catenin antibody

5 Images

Overview

Quantity:	200 µL
Target:	beta Catenin (CATNB)
Reactivity:	Human, Mouse, Rat
Host:	Rabbit
Clonality:	Polyclonal
Conjugate:	This beta Catenin antibody is un-conjugated
Application:	Western Blotting (WB), Immunofluorescence (IF), Immunohistochemistry (IHC)

Product Details

Immunogen:	KLH conjugated Synthetic peptide corresponding to Mouse beta-catenin
Isotype:	IgG
Characteristics:	Polyclonal Antibody
Purification:	Affinity purification

Target Details

Target:	beta Catenin (CATNB)
Alternative Name:	Catenin beta (CATNB Products)
Background:	CTNNB1,also known as β -Catenin,is an evolutionarily conserved,multifunctional intracellular protein. CTNNB1 was originally identified in cell adherens junctions (Ajs) where it functions to bridge the cytoplasmic domain of cadherins to α -catenin and the actin cytoskeleton. Besides its essential role in the Ajs,CTNNB1 is also a key downstream component of the canonical Wnt

Target Details

pathway that plays diverse and critical roles in embryonic development and adult tissue homeostasis. Deregulation of CTNNB1 activity is associated with multiple diseases including cancers. .

Molecular Weight: Observed_MW: 92 kDa
Calculated_MW: 92 kDa

UniProt: [P35222](#), [Q02248](#), [Q9WU82](#)

Pathways: [Peptide Hormone Metabolism](#)

Application Details

Application Notes: WB 1:500-1:2000, IHC 1:300-1:1000, IF 1:200-1:800

Restrictions: For Research Use only

Handling

Format: Liquid

Concentration: 0.97 mg/mL

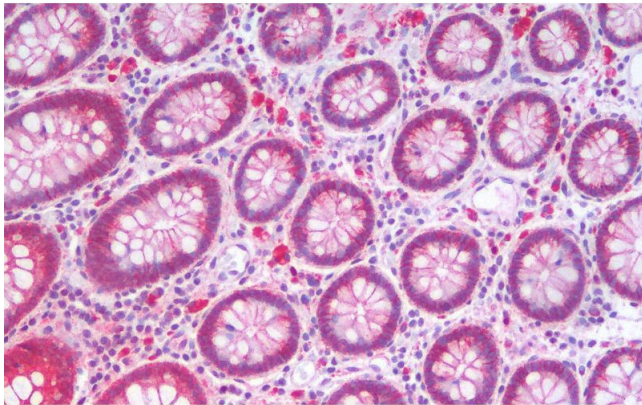
Buffer: PBS with 0.02 % sodium azide, 1 % BSA and 50 % glycerol, pH 7.4

Preservative: Sodium azide

Precaution of Use: This product contains Sodium azide: a POISONOUS AND HAZARDOUS SUBSTANCE which should be handled by trained staff only.

Storage: -20 °C

Storage Comment: Store at -20°C. Avoid freeze / thaw cycles.

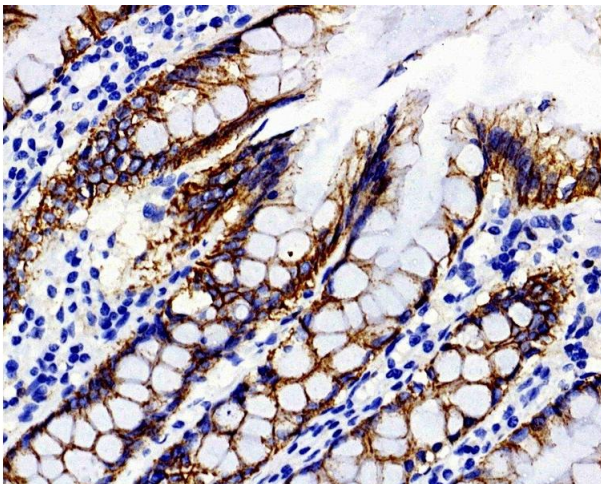
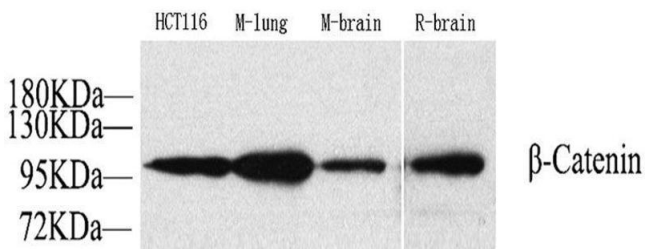


Immunohistochemistry (Paraffin-embedded Sections)

Image 1. Immunohistochemistry analysis of paraffin-embedded Human Colon using Catenin beta Polyclonal Antibody.

Western Blotting

Image 2. Western Blot analysis of various samples using Catenin beta Polyclonal Antibody at dilution of 1:1000.



Immunohistochemistry (Paraffin-embedded Sections)

Image 3. Immunohistochemistry analysis of paraffin-embedded Human colon tissue using Catenin beta Polyclonal Antibody at dilution of 1:300.

Please check the [product details page](#) for more images. Overall 5 images are available for ABIN7249380.