



[Go to Product page](#)

Datasheet for ABIN7249382

## anti-VWF antibody

### 3 Images

#### Overview

Quantity:	200 µL
Target:	VWF
Reactivity:	Human, Rat
Host:	Rabbit
Clonality:	Polyclonal
Conjugate:	This VWF antibody is un-conjugated
Application:	Immunohistochemistry (IHC)

#### Product Details

Immunogen:	KLH conjugated Synthetic peptide corresponding to Mouse VWF
Isotype:	IgG
Characteristics:	Polyclonal Antibody
Purification:	Affinity purification

#### Target Details

Target:	VWF
Alternative Name:	VWF ( <a href="#">VWF Products</a> )
Background:	The glycoprotein encoded by this gene functions as both an antihemophilic factor carrier and a platelet-vessel wall mediator in the blood coagulation system. It is crucial to the hemostasis process. Mutations in this gene or deficiencies in this protein result in von Willebrand's disease. An unprocessed pseudogene has been found on chromosome 22.

## Target Details

---

UniProt: [P04275](#), [Q8CIZ8](#), [Q62935](#)

## Application Details

---

Application Notes: IHC 1:200-1:800

Restrictions: For Research Use only

## Handling

---

Format: Liquid

Concentration: 1.1 mg/mL

Buffer: PBS with 0.02 % sodium azide, 1 % BSA and 50 % glycerol, pH 7.4

Preservative: Sodium azide

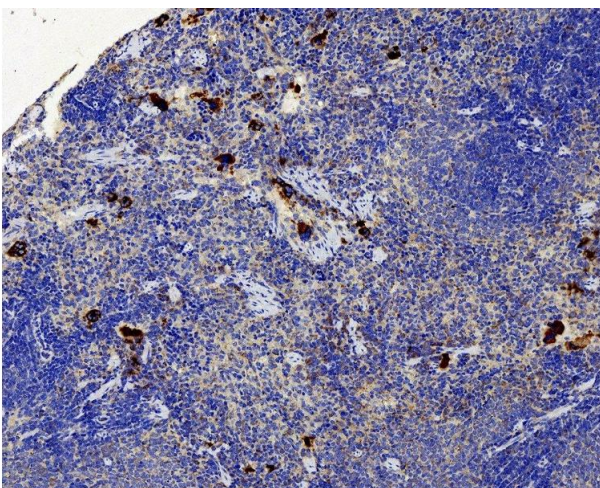
Precaution of Use: This product contains Sodium azide: a POISONOUS AND HAZARDOUS SUBSTANCE which should be handled by trained staff only.

Storage: -20 °C

Storage Comment: Store at -20°C. Avoid freeze / thaw cycles.

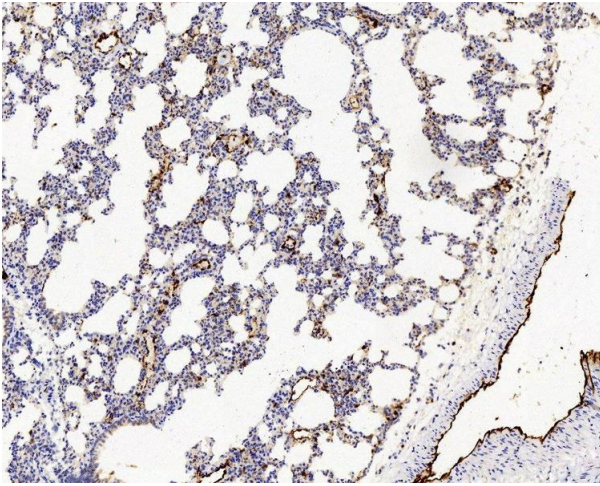
## Images

---



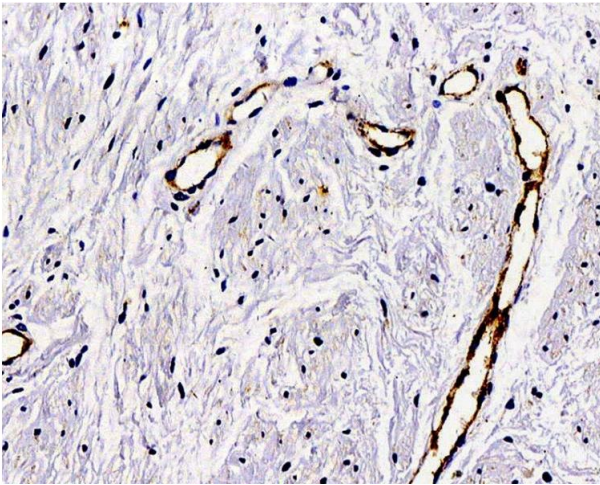
### Immunohistochemistry (Paraffin-embedded Sections)

**Image 1.** Immunohistochemistry analysis of paraffin-embedded Rat spleen using VWF Polyclonal Antibody at dilution of 1:500.



#### Immunohistochemistry (Paraffin-embedded Sections)

**Image 2.** Immunohistochemistry analysis of paraffin-embedded Rat lung using VWF Polyclonal Antibody at dilution of 1:500.



#### Immunohistochemistry (Paraffin-embedded Sections)

**Image 3.** Immunohistochemistry analysis of paraffin-embedded Human hysteromyoma using VWF Polyclonal Antibody at dilution of 1:300.