



[Go to Product page](#)

Datasheet for ABIN7249386

## anti-COL3A1 antibody

### 1 Image

#### Overview

Quantity:	200 µL
Target:	COL3A1
Reactivity:	Mouse, Rat
Host:	Rabbit
Clonality:	Polyclonal
Conjugate:	This COL3A1 antibody is un-conjugated
Application:	Western Blotting (WB)

#### Product Details

Immunogen:	KLH conjugated Synthetic peptide corresponding to Mouse COL3A1
Isotype:	IgG
Characteristics:	Polyclonal Antibody
Purification:	Affinity purification

#### Target Details

Target:	COL3A1
Alternative Name:	COL3A1 ( <a href="#">COL3A1 Products</a> )
Background:	This gene encodes the pro-alpha1 chains of type III collagen, a fibrillar collagen that is found in extensible connective tissues such as skin, lung, uterus, intestine and the vascular system, frequently in association with type I collagen. Mutations in this gene are associated with Ehlers-Danlos syndrome types IV, and with aortic and arterial aneurysms. Two transcripts, resulting

## Target Details

from the use of alternate polyadenylation signals, have been identified for this gene.

Molecular Weight: Observed\_MW: 120 kDa  
Calculated\_MW: 142 kDa

UniProt: [P08121](#), [P13941](#)

Pathways: [Autophagy](#), [Growth Factor Binding](#)

## Application Details

Application Notes: WB 1:500-1:2000

Restrictions: For Research Use only

## Handling

Format: Liquid

Concentration: 160 µg/mL

Buffer: PBS with 0.02 % sodium azide, 1 % BSA and 50 % glycerol, pH 7.4

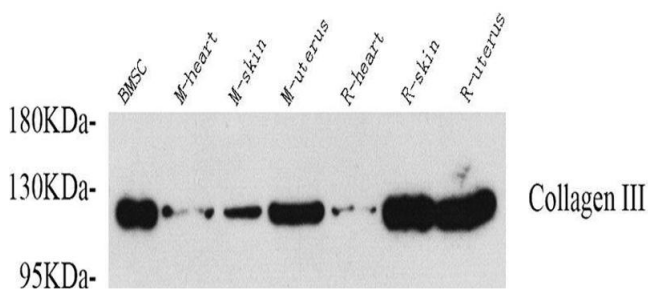
Preservative: Sodium azide

Precaution of Use: This product contains Sodium azide: a POISONOUS AND HAZARDOUS SUBSTANCE which should be handled by trained staff only.

Storage: -20 °C

Storage Comment: Store at -20°C. Avoid freeze / thaw cycles.

## Images



### Western Blotting

**Image 1.** Western Blot analysis of various samples using COL3A1 Polyclonal Antibody at dilution of 1:750.