



Datasheet for ABIN7249404 anti-c-FOS antibody



[Go to Product page](#)

5 Images

Overview

Quantity:	200 µL
Target:	c-FOS (c-Fos)
Reactivity:	Human, Mouse, Rat
Host:	Rabbit
Clonality:	Polyclonal
Conjugate:	This c-FOS antibody is un-conjugated
Application:	Immunohistochemistry (IHC)

Product Details

Immunogen:	KLH conjugated Synthetic peptide corresponding to Mouse c-FOS
Isotype:	IgG
Characteristics:	Polyclonal Antibody
Purification:	Affinity purification

Target Details

Target:	c-FOS (c-Fos)
Alternative Name:	c-Fos (c-Fos Products)

Background: The Fos gene family consists of 4 members: FOS, FOSB, FOSL1, and FOSL2. These genes encode leucine zipper proteins that can dimerize with proteins of the JUN family, thereby forming the transcription factor complex AP-1. As such, the FOS proteins have been implicated as regulators of cell proliferation, differentiation, and transformation. In some cases, expression

Target Details

of the FOS gene has also been associated with apoptotic cell death.

UniProt: [P01100](#), [P01101](#), [P12841](#)

Pathways: [S100 Proteins](#)

Application Details

Application Notes: IHC 1:200-1:1000

Restrictions: For Research Use only

Handling

Format: Liquid

Concentration: 0.55 mg/mL

Buffer: PBS with 0.02 % sodium azide, 1 % BSA and 50 % glycerol, pH 7.4

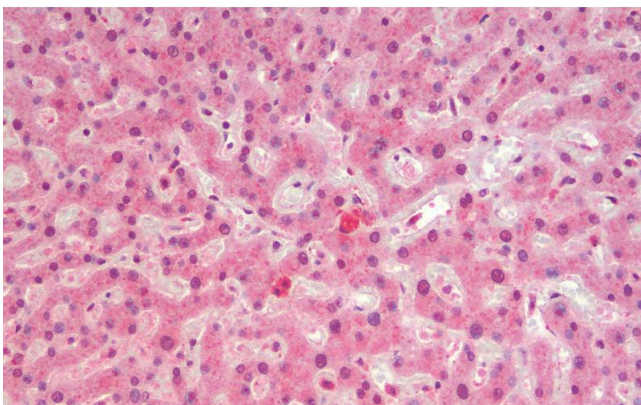
Preservative: Sodium azide

Precaution of Use: This product contains Sodium azide: a POISONOUS AND HAZARDOUS SUBSTANCE which should be handled by trained staff only.

Storage: -20 °C

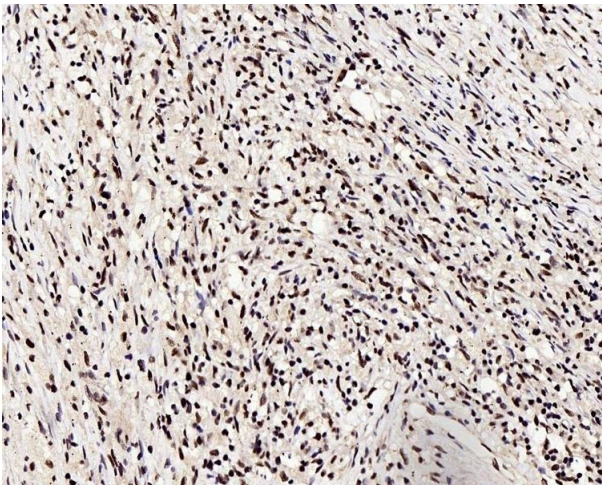
Storage Comment: Store at -20°C. Avoid freeze / thaw cycles.

Images



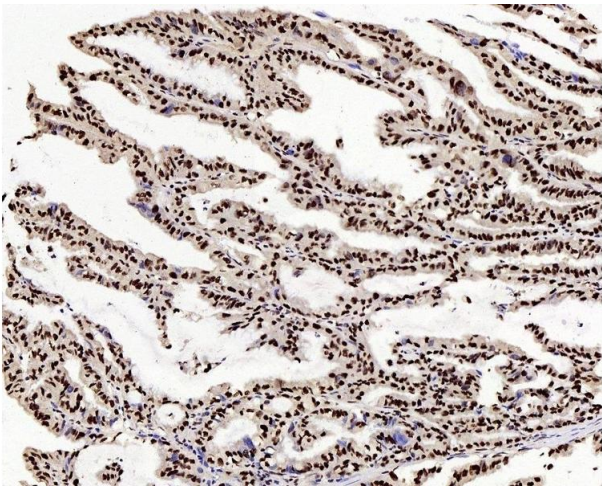
Immunohistochemistry (Paraffin-embedded Sections)

Image 1. Immunohistochemistry analysis of paraffin-embedded Human Liver using c-Fos Polyclonal Antibody.



Immunohistochemistry (Paraffin-embedded Sections)

Image 2. Immunohistochemistry analysis of paraffin-embedded human lung cancer using c-Fos Polyclonal Antibody at dilution of 1:200.



Immunohistochemistry (Paraffin-embedded Sections)

Image 3. Immunohistochemistry analysis of paraffin-embedded human stomach cancer using c-Fos Polyclonal Antibody at dilution of 1:200.

Please check the [product details page](#) for more images. Overall 5 images are available for ABIN7249404.