

Datasheet for ABIN7249442

anti-IL-2 antibody**2** Images[Go to Product page](#)

Overview

Quantity:	200 µL
Target:	IL-2 (IL2)
Reactivity:	Mouse
Host:	Rabbit
Clonality:	Polyclonal
Conjugate:	This IL-2 antibody is un-conjugated
Application:	Immunohistochemistry (IHC), Immunofluorescence (IF)

Product Details

Immunogen:	KLH conjugated Synthetic peptide corresponding to Mouse IL-2
Isotype:	IgG
Characteristics:	Polyclonal Antibody
Purification:	Affinity purification

Target Details

Target:	IL-2 (IL2)
Alternative Name:	IL2 (IL2 Products)
Background:	IL2 is a secreted cytokine involved in the operation and regulation of immune system. IL2 plays a pivotal role in T-cell activation and effector functions, including T cell proliferation, interferon-γ production and cytotoxicity. IL2 can stimulate the propagation of lymphocytes and induce the cytotoxic T lymphocytes and lymphokine-activated killer cells for tumor cells. IL2 also

Target Details

influences memory T cell homeostasis through the regulation of memory T cell numbers and enhances major histocompatibility complex II (MHC II) expression on tumor cells.

UniProt: [P04351](#)

Pathways: [JAK-STAT Signaling](#), [Regulation of Leukocyte Mediated Immunity](#), [Positive Regulation of Immune Effector Process](#), [Production of Molecular Mediator of Immune Response](#), [Activated T Cell Proliferation](#)

Application Details

Application Notes: IHC 1:300-1:1000, IF 1:200-1:800

Restrictions: For Research Use only

Handling

Format: Liquid

Concentration: 0.79 mg/mL

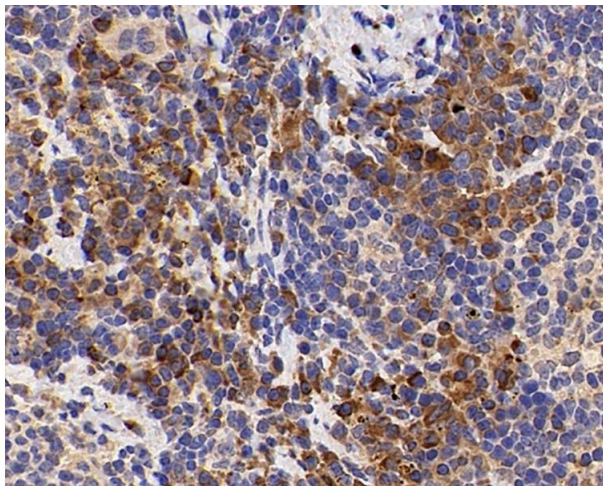
Buffer: PBS with 0.02 % sodium azide, 1 % BSA and 50 % glycerol, pH 7.4

Preservative: Sodium azide

Precaution of Use: This product contains Sodium azide: a POISONOUS AND HAZARDOUS SUBSTANCE which should be handled by trained staff only.

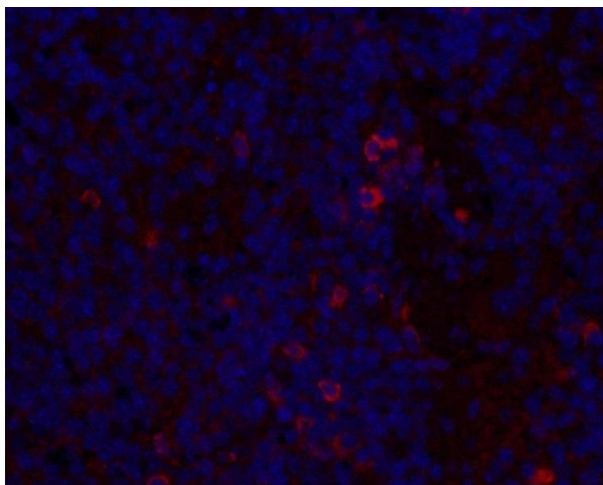
Storage: -20 °C

Storage Comment: Store at -20°C. Avoid freeze / thaw cycles.



Immunohistochemistry (Paraffin-embedded Sections)

Image 1. Immunohistochemistry analysis of paraffin-embedded mouse inflammatory spleen using IL2 Polyclonal Antibody at dilution of 1:500.



Immunofluorescence

Image 2. Immunofluorescence analysis of paraffin-embedded mouse inflammatory spleen using IL2 Polyclonal Antibody at dilution of 1:300.