

Datasheet for ABIN7249452

anti-MMP2 antibody

4 Images

[Go to Product page](#)

Overview

Quantity:	200 µL
Target:	MMP2
Reactivity:	Human, Mouse, Rat
Host:	Rabbit
Clonality:	Polyclonal
Conjugate:	This MMP2 antibody is un-conjugated
Application:	Immunohistochemistry (IHC)

Product Details

Immunogen:	KLH conjugated Synthetic peptide corresponding to Mouse MMP2
Isotype:	IgG
Characteristics:	Polyclonal Antibody
Purification:	Affinity purification

Target Details

Target:	MMP2
Alternative Name:	MMP2 (MMP2 Products)
Background:	MMP2,also named as CLG4A,Gelatinase Am,TBE-1 and PEX,belongs to the peptidase M10A family. It is ubiquitous metalloproteinase that is involved in diverse functions such as remodeling of the vasculature,angiogenesis,tissue repair,tumor invasion,inflammation,and atherosclerotic plaque rupture. MMP2 contributes to myocardial oxidative stress by regulating

Target Details

the activity of GSK3beta. It cleaves GSK3beta in vitro. MMP2 can be cleaved into PEX chain(~60kd).Western blot analysis showed that the 72 kDa and 62 kDa proteinase activities were pro-MMP2 and the active enzyme,respectively.

UniProt: [P08253](#), [P33436](#), [P33434](#)

Pathways: [Activation of Innate immune Response](#)

Application Details

Application Notes: IHC 1:500-1:2000

Restrictions: For Research Use only

Handling

Format: Liquid

Concentration: 0.82 mg/mL

Buffer: PBS with 0.02 % sodium azide, 1 % BSA and 50 % glycerol, pH 7.4

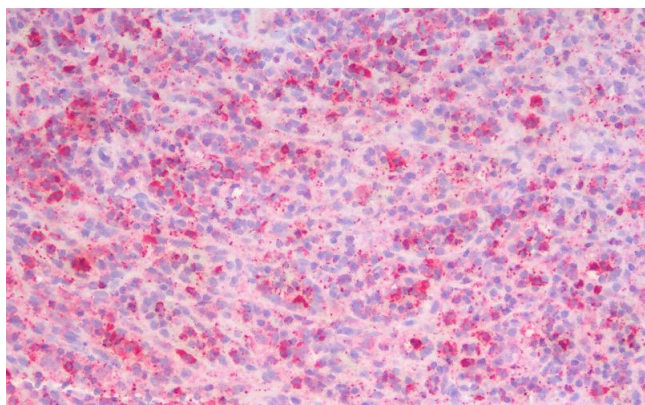
Preservative: Sodium azide

Precaution of Use: This product contains Sodium azide: a POISONOUS AND HAZARDOUS SUBSTANCE which should be handled by trained staff only.

Storage: -20 °C

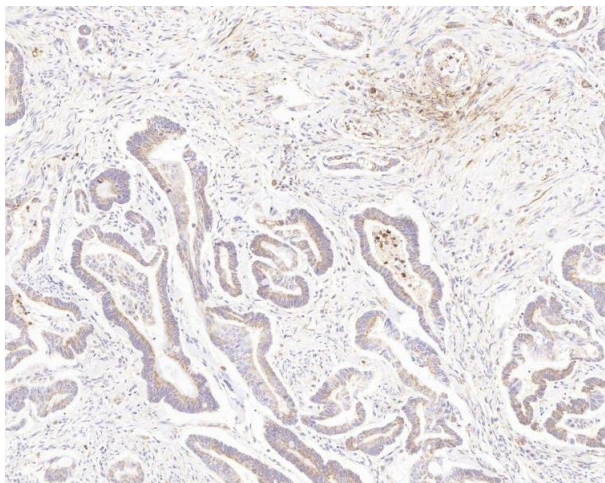
Storage Comment: Store at -20°C. Avoid freeze / thaw cycles.

Images



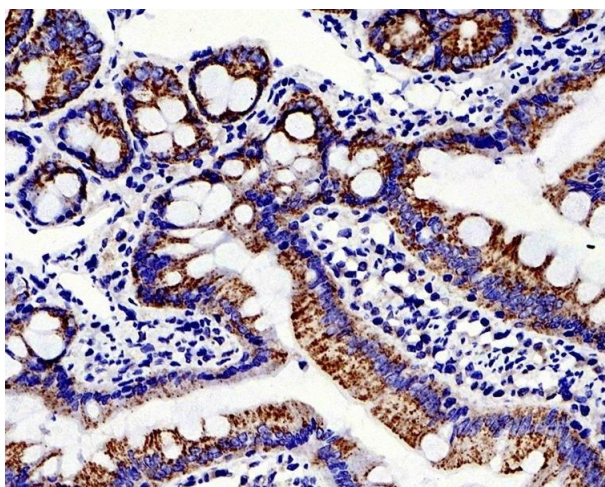
Immunohistochemistry (Paraffin-embedded Sections)

Image 1. Immunohistochemistry analysis of paraffin-embedded Human Spleen using MMP2 Polyclonal Antibody.



Immunohistochemistry (Paraffin-embedded Sections)

Image 2. Immunohistochemistry analysis of paraffin-embedded human colon cancer using MMP2 Polyclonal Antibody at dilution of 1:500.



Immunohistochemistry (Paraffin-embedded Sections)

Image 3. Immunohistochemistry analysis of paraffin-embedded rat colon using MMP2 Polyclonal Antibody at dilution of 1:500.

Please check the [product details page](#) for more images. Overall 4 images are available for ABIN7249452.