



## Datasheet for ABIN7249458 anti-N-Cadherin antibody



[Go to Product page](#)

### 4 Images

#### Overview

Quantity:	200 µL
Target:	N-Cadherin (CDH2)
Reactivity:	Human, Mouse, Rat
Host:	Rabbit
Clonality:	Polyclonal
Conjugate:	This N-Cadherin antibody is un-conjugated
Application:	Western Blotting (WB), Immunohistochemistry (IHC)

#### Product Details

Immunogen:	KLH conjugated Synthetic peptide corresponding to Mouse N-cadherin
Isotype:	IgG
Characteristics:	Polyclonal Antibody
Purification:	Affinity purification

#### Target Details

Target:	N-Cadherin (CDH2)
Alternative Name:	N-cadherin ( <a href="#">CDH2 Products</a> )
Background:	Cadherins are a family of transmembrane glycoproteins that mediate calcium-dependent cell-cell adhesion and play an important role in the maintenance of normal tissue architecture. N-cadherin (neural cadherin), also known as CDH2 (cadherin 2), is a classical member of the cadherin superfamily which also include E-, P-, R-, and B-cadherins. Expression of N-cadherin has

## Target Details

---

been reported on various cell types including neurons, endothelial cells and cardiac myocytes .  
N-cadherin has functions in early brain morphogenesis, synaptogenesis and synaptic plasticity .

Molecular Weight: Observed\_MW: 120 kDa  
Calculated\_MW: 100/120/140 kDa

UniProt: [P19022](#), [P15116](#), [Q9Z1Y3](#)

Pathways: [Regulation of Muscle Cell Differentiation](#), [Cell-Cell Junction Organization](#), [Synaptic Membrane](#)

## Application Details

---

Application Notes: WB 1:500-1:2000, IHC 1:300-1:800

Restrictions: For Research Use only

## Handling

---

Format: Liquid

Concentration: 200 µg/mL

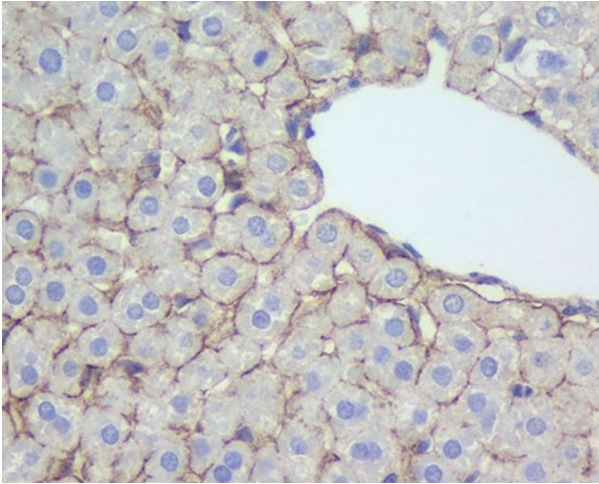
Buffer: PBS with 0.02 % sodium azide, 1 % BSA and 50 % glycerol, pH 7.4

Preservative: Sodium azide

Precaution of Use: This product contains Sodium azide: a POISONOUS AND HAZARDOUS SUBSTANCE which should be handled by trained staff only.

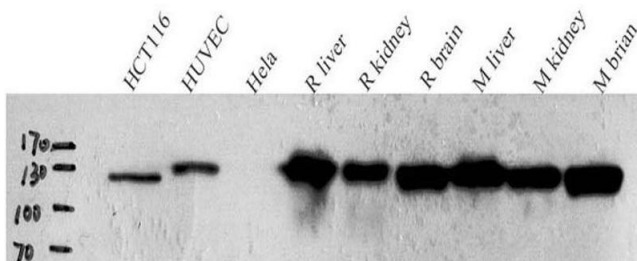
Storage: -20 °C

Storage Comment: Store at -20°C. Avoid freeze / thaw cycles.



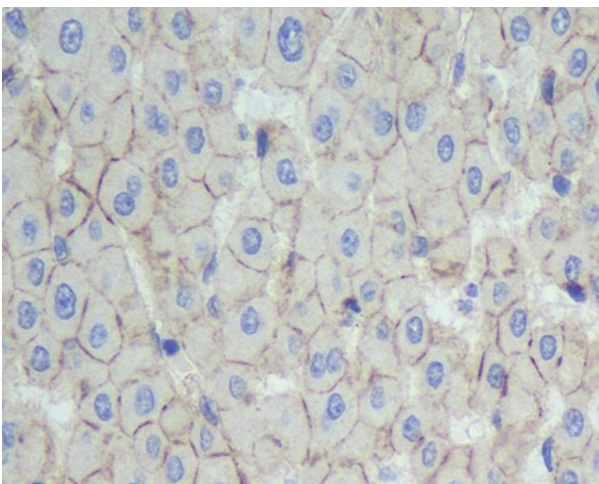
### Immunohistochemistry (Paraffin-embedded Sections)

**Image 1.** Immunohistochemistry analysis of paraffin-embedded rat liver using N-cadherin Polyclonal Antibody at dilution of 1:500.



### Western Blotting

**Image 2.** Western Blot analysis of various samples using N-cadherin Polyclonal Antibody at dilution of 1:1000.



### Immunohistochemistry (Paraffin-embedded Sections)

**Image 3.** Immunohistochemistry analysis of paraffin-embedded human liver using N-cadherin Polyclonal Antibody at dilution of 1:500.

Please check the [product details page](#) for more images. Overall 4 images are available for ABIN7249458.