

Datasheet for ABIN7249468  
**anti-CDKN1B antibody**[Go to Product page](#)

## 4 Images

## Overview

Quantity:	200 µL
Target:	CDKN1B
Reactivity:	Human, Rat
Host:	Rabbit
Clonality:	Polyclonal
Conjugate:	This CDKN1B antibody is un-conjugated
Application:	Immunohistochemistry (IHC)

## Product Details

Immunogen:	KLH conjugated Synthetic peptide corresponding to Mouse P27 KIP1
Isotype:	IgG
Characteristics:	Polyclonal Antibody
Purification:	Affinity purification

## Target Details

Target:	CDKN1B
Alternative Name:	Cyclin-Dependent Kinase Inhibitor 1B (p27, Kip1) ( <a href="#">CDKN1B Products</a> )
Background:	This gene encodes a cyclin-dependent kinase inhibitor, which shares a limited similarity with CDK inhibitor CDKN1A/p21. The encoded protein binds to and prevents the activation of cyclin E-CDK2 or cyclin D-CDK4 complexes, and thus controls the cell cycle progression at G1. The degradation of this protein, which is triggered by its CDK dependent phosphorylation and

## Target Details

subsequent ubiquitination by SCF complexes, is required for the cellular transition from quiescence to the proliferative state. Mutations in this gene are associated with multiple endocrine neoplasia type IV (MEN4).

UniProt: [P46527](#), [P46414](#)

Pathways: [Cell Division Cycle](#), [Fc-epsilon Receptor Signaling Pathway](#), [EGFR Signaling Pathway](#), [Neurotrophin Signaling Pathway](#), [Positive Regulation of Peptide Hormone Secretion](#), [Negative Regulation of Hormone Secretion](#), [Sensory Perception of Sound](#), [Mitotic G1-G1/S Phases](#), [DNA Replication](#), [Positive Regulation of Endopeptidase Activity](#), [Synthesis of DNA](#), [Autophagy](#)

## Application Details

Application Notes: IHC 1:100-1:400

Restrictions: For Research Use only

## Handling

Format: Liquid

Concentration: 0.89 mg/mL

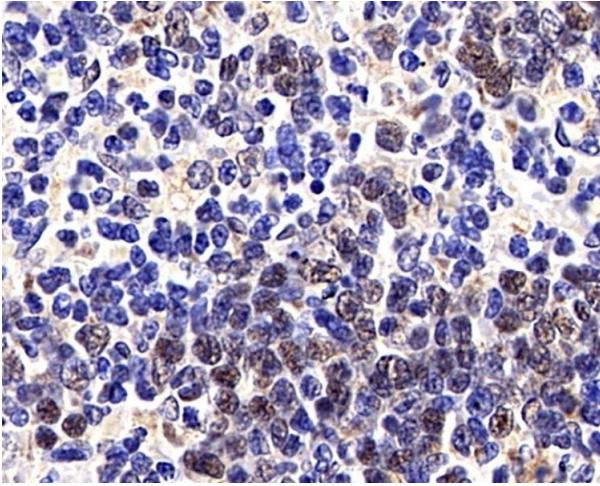
Buffer: PBS with 0.02 % sodium azide, 1 % BSA and 50 % glycerol, pH 7.4

Preservative: Sodium azide

Precaution of Use: This product contains Sodium azide: a POISONOUS AND HAZARDOUS SUBSTANCE which should be handled by trained staff only.

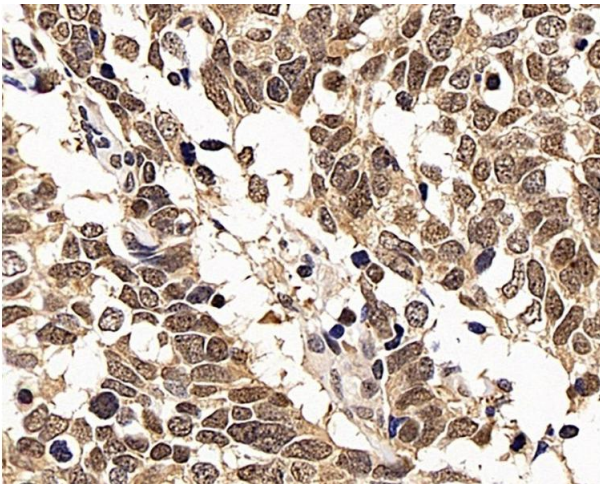
Storage: -20 °C

Storage Comment: Store at -20°C. Avoid freeze / thaw cycles.



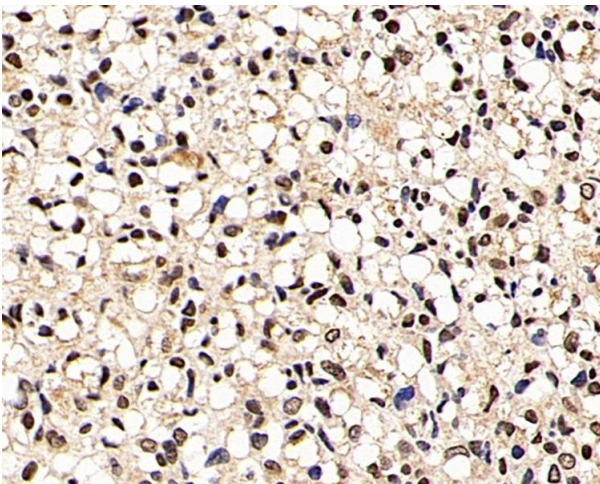
#### Immunohistochemistry (Paraffin-embedded Sections)

**Image 1.** Immunohistochemistry analysis of paraffin-embedded Rat spleen cancer using p27 Polyclonal Antibody at dilution of 1:200.



#### Immunohistochemistry (Paraffin-embedded Sections)

**Image 2.** Immunohistochemistry analysis of paraffin-embedded human lung cancer using p27 Polyclonal Antibody at dilution of 1:200.



#### Immunohistochemistry (Paraffin-embedded Sections)

**Image 3.** Immunohistochemistry analysis of paraffin-embedded human liver cancer using p27 Polyclonal Antibody at dilution of 1:200.

Please check the [product details page](#) for more images. Overall 4 images are available for ABIN7249468.