

Datasheet for ABIN7249506

anti-Myeloperoxidase antibody

4 Images

[Go to Product page](#)

Overview

Quantity:	200 µL
Target:	Myeloperoxidase (MPO)
Reactivity:	Human, Mouse, Rat
Host:	Rabbit
Clonality:	Polyclonal
Conjugate:	This Myeloperoxidase antibody is un-conjugated
Application:	Immunohistochemistry (IHC), Immunofluorescence (IF)

Product Details

Immunogen:	KLH conjugated Synthetic peptide corresponding to Mouse MPO
Isotype:	IgG
Characteristics:	Polyclonal Antibody
Purification:	Affinity purification

Target Details

Target:	Myeloperoxidase (MPO)
Alternative Name:	MPO (MPO Products)
Background:	Myeloperoxidase (MPO) is a heme protein synthesized during myeloid differentiation that constitutes the major component of neutrophil azurophilic granules. Produced as a single chain precursor, myeloperoxidase is subsequently cleaved into a light and heavy chain. The mature myeloperoxidase is a tetramer composed of 2 light chains and 2 heavy chains. This enzyme

Target Details

produces hypohalous acids central to the microbicidal activity of neutrophils.

UniProt: [P05164](#), [P11247](#)

Pathways: [Chromatin Binding](#)

Application Details

Application Notes: IHC 1:500-1:1000, IF 1:200-1:500

Restrictions: For Research Use only

Handling

Format: Liquid

Concentration: 0.81 mg/mL

Buffer: PBS with 0.02 % sodium azide, 1 % BSA and 50 % glycerol, pH 7.4

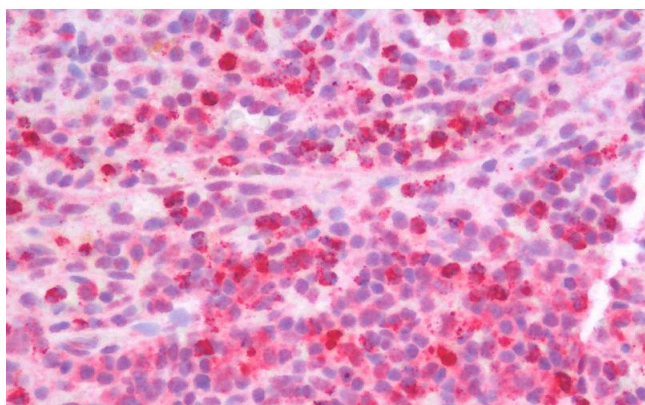
Preservative: Sodium azide

Precaution of Use: This product contains Sodium azide: a POISONOUS AND HAZARDOUS SUBSTANCE which should be handled by trained staff only.

Storage: -20 °C

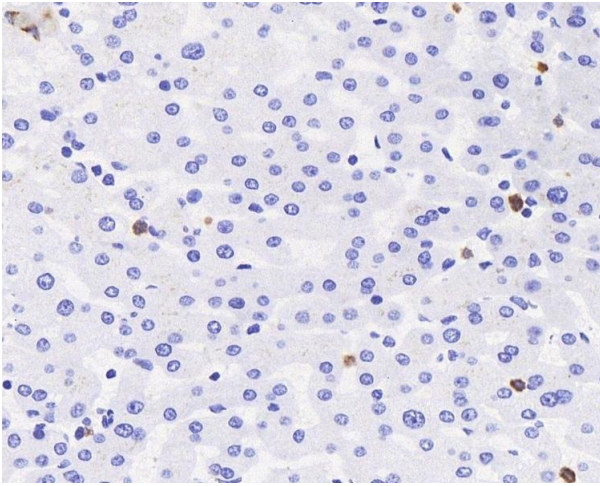
Storage Comment: Store at -20°C. Avoid freeze / thaw cycles.

Images



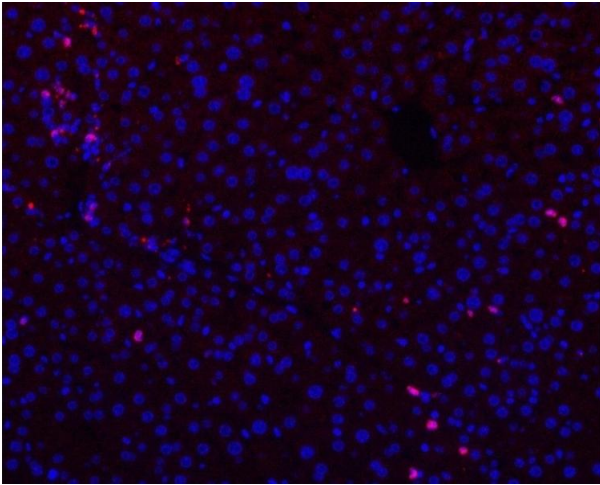
Immunohistochemistry (Paraffin-embedded Sections)

Image 1. Immunohistochemistry analysis of paraffin-embedded Human Spleen using MPO Polyclonal Antibody.



Immunohistochemistry (Paraffin-embedded Sections)

Image 2. Immunohistochemistry analysis of paraffin-embedded human liver using MPO Polyclonal Antibody at dilution of 1:300.



Immunofluorescence

Image 3. Immunofluorescence analysis of paraffin-embedded human liver using MPO Polyclonal Antibody at dilution of 1:300.

Please check the [product details page](#) for more images. Overall 4 images are available for ABIN7249506.