

Datasheet for ABIN7249514
anti-Osteocalcin antibody

2 Images

[Go to Product page](#)

Overview

| | |
|--------------|--|
| Quantity: | 200 µL |
| Target: | Osteocalcin (BGLAP) |
| Reactivity: | Rat, Mouse |
| Host: | Rabbit |
| Clonality: | Polyclonal |
| Conjugate: | This Osteocalcin antibody is un-conjugated |
| Application: | Immunohistochemistry (IHC) |

Product Details

| | |
|------------------|---|
| Immunogen: | KLH conjugated Synthetic peptide corresponding to Mouse Osteocalcin |
| Isotype: | IgG |
| Characteristics: | Polyclonal Antibody |
| Purification: | Affinity purification |

Target Details

| | |
|-------------------|--|
| Target: | Osteocalcin (BGLAP) |
| Alternative Name: | BGLAP (BGLAP Products) |
| Background: | Bone gamma-carboxyglutamic acid (Gla) protein, known as BGLAP, BGP or osteocalcin, is an abundant, non-collagenous protein component of bone that is produced by osteoblasts. In mice, osteocalcin is composed of a cluster of 3 genes known as OG1, OG2 and ORG, all of which can be found within a 23Kb span of genomic DNA. Human osteocalcin is a highly |

Target Details

conserved, 46-50 amino acid, single chain protein that contains three vitamin K-dependent γ -carboxyglutamic acid residues. Osteocalcin appears transiently in embryonic bone at the time of mineral deposition, where it binds to hydroxyapatite in a calcium-dependent manner.

UniProt: [P86546](#), [P04640](#)

Application Details

Application Notes: IHC 1:100-1:500

Restrictions: For Research Use only

Handling

Format: Liquid

Concentration: 0.84 mg/mL

Buffer: PBS with 0.02 % sodium azide, 1 % BSA and 50 % glycerol, pH 7.4

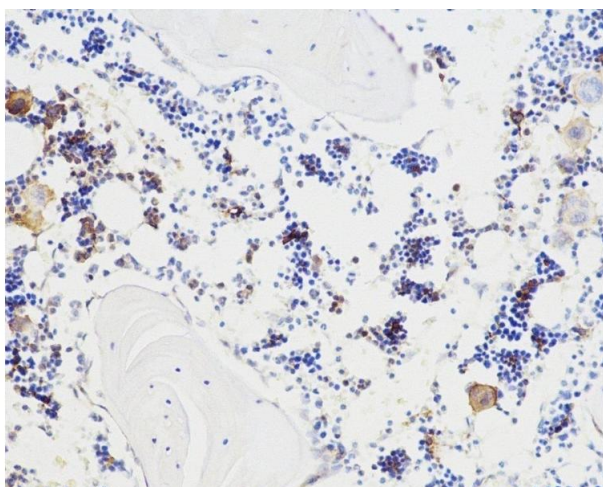
Preservative: Sodium azide

Precaution of Use: This product contains Sodium azide: a POISONOUS AND HAZARDOUS SUBSTANCE which should be handled by trained staff only.

Storage: -20 °C

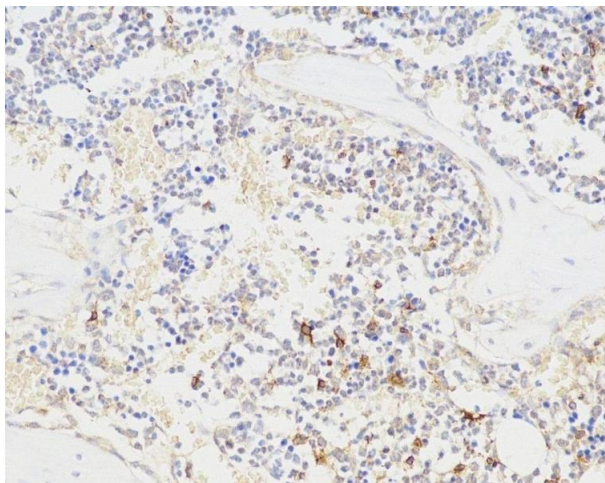
Storage Comment: Store at -20°C. Avoid freeze / thaw cycles.

Images



Immunohistochemistry (Paraffin-embedded Sections)

Image 1. Immunohistochemistry analysis of paraffin-embedded mouse bone using BGLAP Polyclonal Antibody at dilution of 1:100.



Immunohistochemistry (Paraffin-embedded Sections)

Image 2. Immunohistochemistry analysis of paraffin-embedded rat bone using BGLAP Polyclonal Antibody at dilution of 1:100.