

Datasheet for ABIN7249516

anti-Connexin 43/GJA1 antibody**3** Images[Go to Product page](#)

Overview

Quantity:	200 µL
Target:	Connexin 43/GJA1 (GJA1)
Reactivity:	Human, Rat, Mouse
Host:	Rabbit
Clonality:	Polyclonal
Conjugate:	This Connexin 43/GJA1 antibody is un-conjugated
Application:	Western Blotting (WB), Immunohistochemistry (IHC)

Product Details

Immunogen:	KLH conjugated Synthetic peptide corresponding to Mouse Connexin 43
Isotype:	IgG
Characteristics:	Polyclonal Antibody
Purification:	Affinity purification

Target Details

Target:	Connexin 43/GJA1 (GJA1)
Alternative Name:	Connexin 43 (GJA1 Products)
Background:	This gene is a member of the connexin gene family. The encoded protein is a component of gap junctions, which are composed of arrays of intercellular channels that provide a route for the diffusion of low molecular weight materials from cell to cell. The encoded protein is the major protein of gap junctions in the heart that are thought to have a crucial role in the

Target Details

synchronized contraction of the heart and in embryonic development. A related intronless pseudogene has been mapped to chromosome 5. Mutations in this gene have been associated with oculodentodigital dysplasia, autosomal recessive craniometaphyseal dysplasia and heart malformations.

Molecular Weight: Observed_MW: 43 kDa
Calculated_MW: 43 kDa

UniProt: [P17302](#), [P23242](#), [P08050](#)

Pathways: [MAPK Signaling](#), [Myometrial Relaxation and Contraction](#), [Cell-Cell Junction Organization](#)

Application Details

Application Notes: WB 1:1000-1:2000, IHC 1:300-1:800

Restrictions: For Research Use only

Handling

Format: Liquid

Concentration: 0.53 mg/mL

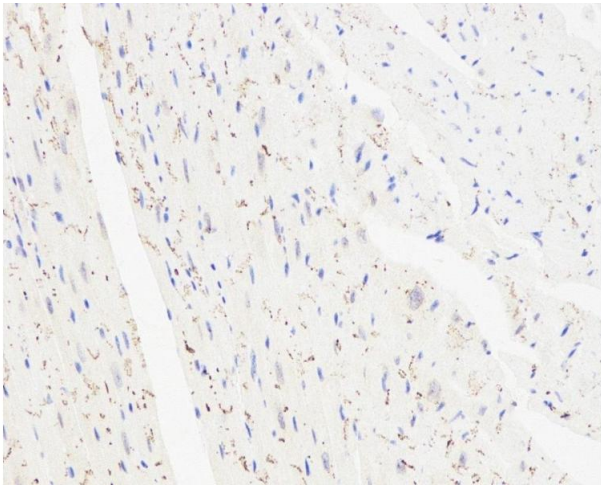
Buffer: PBS with 0.02 % sodium azide, 1 % BSA and 50 % glycerol, pH 7.4

Preservative: Sodium azide

Precaution of Use: This product contains Sodium azide: a POISONOUS AND HAZARDOUS SUBSTANCE which should be handled by trained staff only.

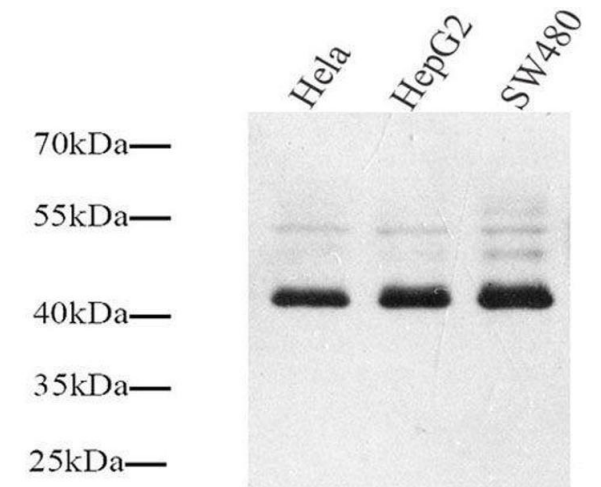
Storage: -20 °C

Storage Comment: Store at -20°C. Avoid freeze / thaw cycles.



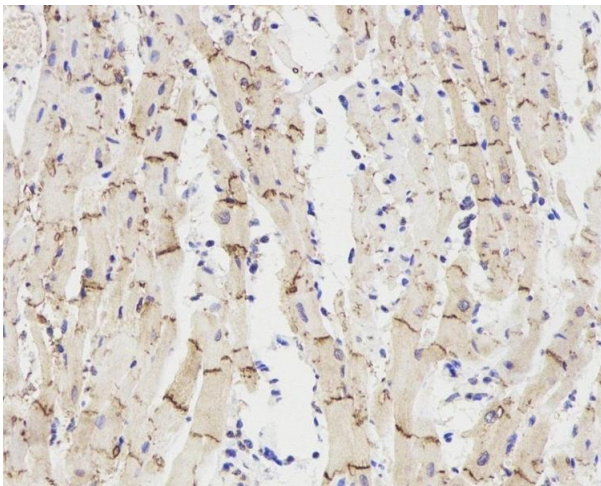
Immunohistochemistry (Paraffin-embedded Sections)

Image 1. Immunohistochemistry analysis of paraffin-embedded mouse heart using Connexin 43 Polyclonal Antibody at dilution of 1:300.



Western Blotting

Image 2. Western Blot analysis of various samples using Connexin 43 Polyclonal Antibody at dilution of 1:1000.



Immunohistochemistry (Paraffin-embedded Sections)

Image 3. Immunohistochemistry analysis of paraffin-embedded rat heart using Connexin 43 Polyclonal Antibody at dilution of 1:300.