



[Go to Product page](#)

Datasheet for ABIN7249544
anti-Cyclin B1 antibody

3 Images

Overview

Quantity:	200 µL
Target:	Cyclin B1 (CCNB1)
Reactivity:	Human, Mouse, Rat
Host:	Rabbit
Clonality:	Polyclonal
Conjugate:	This Cyclin B1 antibody is un-conjugated
Application:	Western Blotting (WB), Immunohistochemistry (IHC), Immunofluorescence (IF)

Product Details

Immunogen:	KLH conjugated Synthetic peptide corresponding to Mouse Cyclin B1
Isotype:	IgG
Characteristics:	Polyclonal Antibody
Purification:	Affinity purification

Target Details

Target:	Cyclin B1 (CCNB1)
Alternative Name:	Cyclin B1 (CCNB1 Products)
Background:	G2/mitotic-specific cyclin-B1 is a protein that in humans is encoded by the CCNB1 gene. The protein encoded by this gene is a regulatory protein involved in mitosis. The gene product complexes with p34(cdc2) to form the maturation-promoting factor (MPF). Two alternative transcripts have been found, a constitutively expressed transcript and a cell cycle-regulated

Target Details

transcript, that is expressed predominantly during G2/M phase. The different transcripts result from the use of alternate transcription initiation sites.

Molecular Weight: Observed_MW: 55 kDa
Calculated_MW: 55 kDa

UniProt: [P14635](#), [P24860](#), [P30277](#)

Pathways: [Cell Division Cycle](#), [AMPK Signaling](#), [Mitotic G1-G1/S Phases](#), [M Phase](#)

Application Details

Application Notes: WB 1:500-1:2000, IHC 1:300-1:500, IF 1:100-1:300

Restrictions: For Research Use only

Handling

Format: Liquid

Concentration: 270 µg/mL

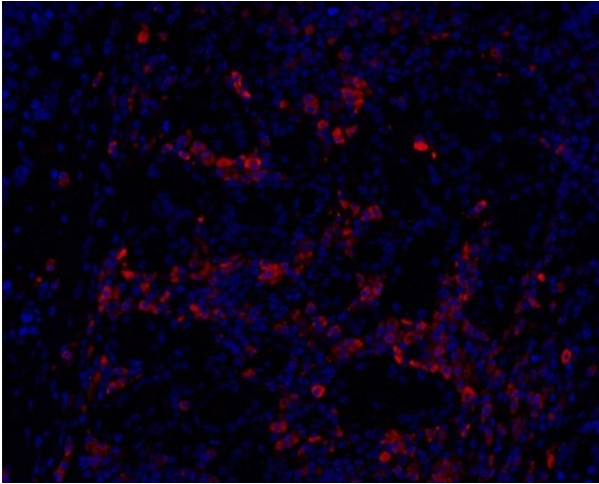
Buffer: PBS with 0.02 % sodium azide, 1 % BSA and 50 % glycerol, pH 7.4

Preservative: Sodium azide

Precaution of Use: This product contains Sodium azide: a POISONOUS AND HAZARDOUS SUBSTANCE which should be handled by trained staff only.

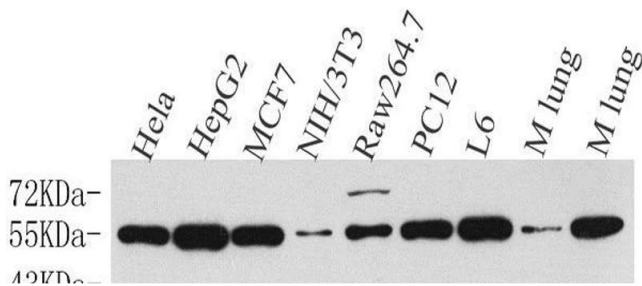
Storage: -20 °C

Storage Comment: Store at -20°C. Avoid freeze / thaw cycles.



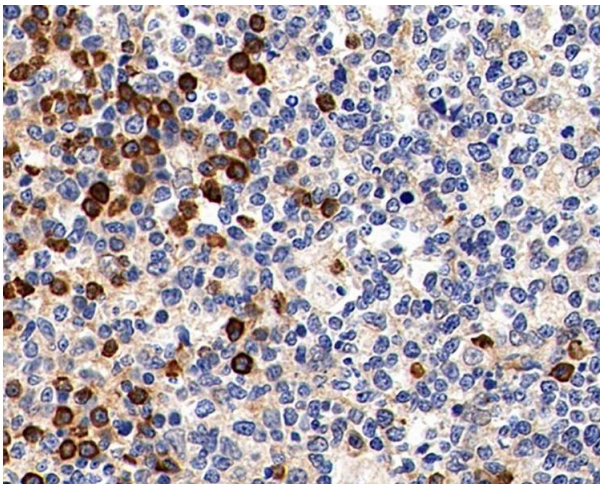
Immunofluorescence

Image 1. Immunofluorescence analysis of paraffin-embedded Human lung cancer using Cyclin B1 Polyclonal Antibody at dilution of 1:100.



Western Blotting

Image 2. Western Blot analysis of various samples using Cyclin B1 Polyclonal Antibody at dilution of 1:500.



Immunohistochemistry (Paraffin-embedded Sections)

Image 3. Immunohistochemistry analysis of paraffin-embedded Human tonsil using Cyclin B1 Polyclonal Antibody at dilution of 1:300.