

Datasheet for ABIN7249604
anti-Claudin 5 antibody

2 Images

[Go to Product page](#)

Overview

Quantity:	200 µL
Target:	Claudin 5 (CLDN5)
Reactivity:	Human
Host:	Rabbit
Clonality:	Polyclonal
Conjugate:	This Claudin 5 antibody is un-conjugated
Application:	Immunohistochemistry (IHC)

Product Details

Immunogen:	KLH conjugated Synthetic peptide corresponding to Mouse claudin 5
Isotype:	IgG
Characteristics:	Polyclonal Antibody
Purification:	Affinity purification

Target Details

Target:	Claudin 5 (CLDN5)
Alternative Name:	Claudin 5 (CLDN5 Products)
Background:	This gene encodes a member of the claudin family. Claudins are integral membrane proteins and components of tight junction strands. Tight junction strands serve as a physical barrier to prevent solutes and water from passing freely through the paracellular space between epithelial or endothelial cell sheets. Mutations in this gene have been found in patients with

Target Details

velocardiofacial syndrome. Alternatively spliced transcript variants encoding the same protein have been found for this gene

UniProt: [O00501](#), [O54942](#)

Pathways: [Hepatitis C](#)

Application Details

Application Notes: IHC 1:200-1:1000

Restrictions: For Research Use only

Handling

Format: Liquid

Concentration: 0.74 mg/mL

Buffer: PBS with 0.02 % sodium azide, 1 % BSA and 50 % glycerol, pH 7.4

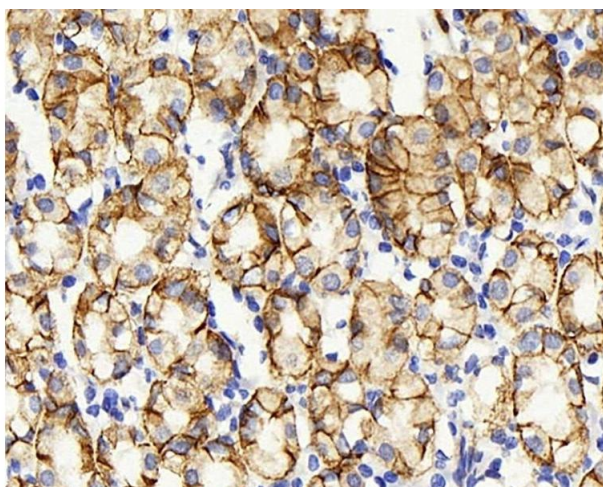
Preservative: Sodium azide

Precaution of Use: This product contains Sodium azide: a POISONOUS AND HAZARDOUS SUBSTANCE which should be handled by trained staff only.

Storage: -20 °C

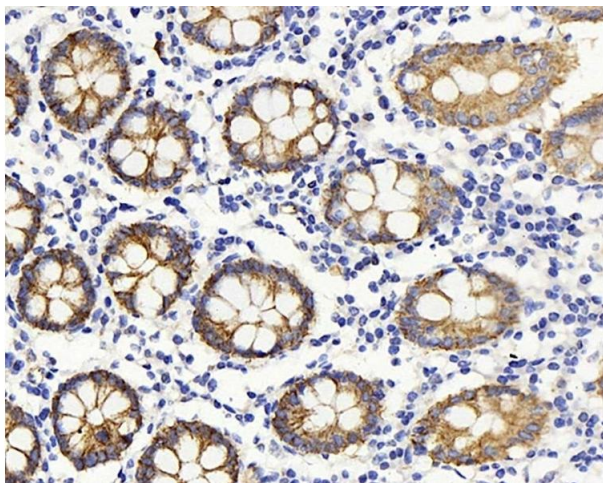
Storage Comment: Store at -20°C. Avoid freeze / thaw cycles.

Images



Immunohistochemistry (Paraffin-embedded Sections)

Image 1. Immunohistochemistry analysis of paraffin-embedded human stomach using Claudin 5 Polyclonal Antibody at dilution of 1:400.



Immunohistochemistry (Paraffin-embedded Sections)

Image 2. Immunohistochemistry analysis of paraffin-embedded human colon using Claudin 5 Polyclonal Antibody at dilution of 1:400.