

Datasheet for ABIN7249616

anti-SLC2A3 antibody**3** Images[Go to Product page](#)

Overview

Quantity:	200 µL
Target:	SLC2A3
Reactivity:	Human, Rat
Host:	Rabbit
Clonality:	Polyclonal
Conjugate:	This SLC2A3 antibody is un-conjugated
Application:	Western Blotting (WB), Immunohistochemistry (IHC)

Product Details

Immunogen:	KLH conjugated Synthetic peptide corresponding to Mouse GLUT3
Isotype:	IgG
Characteristics:	Polyclonal Antibody
Purification:	Affinity purification

Target Details

Target:	SLC2A3
Alternative Name:	GLUT-3 (SLC2A3 Products)
Background:	<p>Glucose transporter 3 (or GLUT3), also known as solute carrier family 2, facilitated glucose transporter member 3 (SLC2A3) is a protein that in humans is encoded by the SLC2A3 gene.</p> <p>GLUT3 facilitates the transport of glucose across the plasma membranes of mammalian cells.</p> <p>GLUT3 is most known for its specific expression in neurons and has originally been designated</p>

Target Details

as the neuronal GLUT. GLUT3 has been studied in other cell types with specific glucose requirements, including sperm, preimplantation embryos, circulating white blood cells and carcinoma cell lines. GLUT3 has both a higher affinity for glucose and at least a fivefold greater transport capacity than GLUT1, GLUT2 and GLUT4, which is particularly significant for its role in neuronal glucose transport, where ambient glucose levels are fivefold lower than in serum.

Molecular Weight: Observed_MW: 48 kDa
Calculated_MW: 48 kDa

UniProt: [P11169](#), [P32037](#), [Q07647](#)

Pathways: [Warburg Effect](#)

Application Details

Application Notes: WB 1:500-1:1000, IHC 1:200-1:800

Restrictions: For Research Use only

Handling

Format: Liquid

Concentration: 360 µg/mL

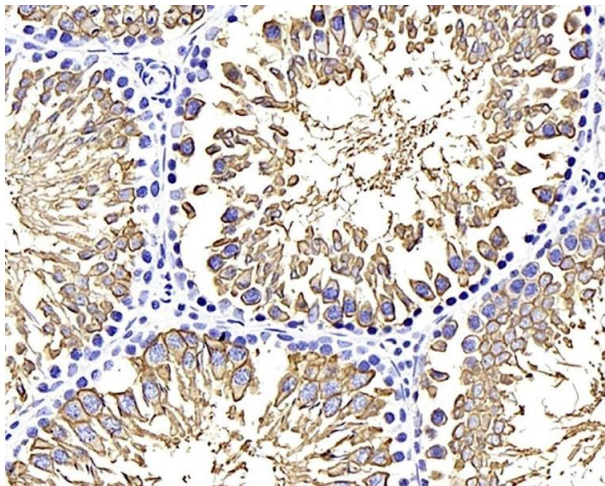
Buffer: PBS with 0.02 % sodium azide, 1 % BSA and 50 % glycerol, pH 7.4

Preservative: Sodium azide

Precaution of Use: This product contains Sodium azide: a POISONOUS AND HAZARDOUS SUBSTANCE which should be handled by trained staff only.

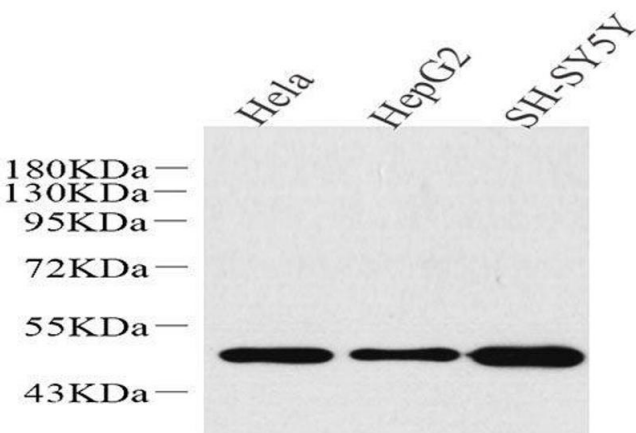
Storage: -20 °C

Storage Comment: Store at -20°C. Avoid freeze / thaw cycles.



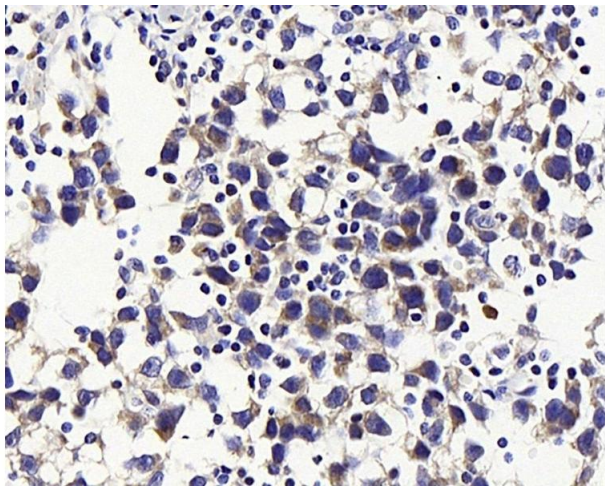
Immunohistochemistry (Paraffin-embedded Sections)

Image 1. Immunohistochemistry analysis of paraffin-embedded rat testis using GLUT-3 Polyclonal Antibody at dilution of 1:400.



Western Blotting

Image 2. Western Blot analysis of various samples using GLUT-3 Polyclonal Antibody at dilution of 1:1000.



Immunohistochemistry (Paraffin-embedded Sections)

Image 3. Immunohistochemistry analysis of paraffin-embedded human testis cancer using GLUT-3 Polyclonal Antibody at dilution of 1:300.