

Datasheet for ABIN7249626  
**anti-Sialoadhesin/CD169 antibody**[Go to Product page](#)

## 2 Images

## Overview

Quantity:	200 µL
Target:	Sialoadhesin/CD169 (SIGLEC1)
Reactivity:	Human, Rat
Host:	Rabbit
Clonality:	Polyclonal
Conjugate:	This Sialoadhesin/CD169 antibody is un-conjugated
Application:	Immunohistochemistry (IHC)

## Product Details

Immunogen:	KLH conjugated Synthetic peptide corresponding to Mouse CD169
Isotype:	IgG
Characteristics:	Polyclonal Antibody
Purification:	Affinity purification

## Target Details

Target:	Sialoadhesin/CD169 (SIGLEC1)
Alternative Name:	CD169 ( <a href="#">SIGLEC1 Products</a> )
Background:	This gene encodes a member of the immunoglobulin superfamily. The encoded protein is a lectin-like adhesion molecule that binds glycoconjugate ligands on cell surfaces in a sialic acid-dependent manner. It is a type I transmembrane protein expressed only by a subpopulation of macrophages and is involved in mediating cell-cell interactions. Alternative splicing produces a

## Target Details

transcript variant encoding an isoform that is soluble rather than membrane-bound, however, the full-length nature of this variant has not been determined. SIGLEC1 (Sialic Acid Binding Ig Like Lectin 1) is a Protein Coding gene. Diseases associated with SIGLEC1 include Proliferative Glomerulonephritis and Diffuse Cutaneous Systemic Sclerosis. Among its related pathways are Immunoregulatory interactions between a Lymphoid and a non-Lymphoid cell and Innate Immune System. GO annotations related to this gene include carbohydrate binding. An important paralog of this gene is CD22.

UniProt: [Q9BZZ2](#), [Q62230](#)

## Application Details

Application Notes: IHC 1:200-1:800

Restrictions: For Research Use only

## Handling

Format: Liquid

Concentration: 1.4 mg/mL

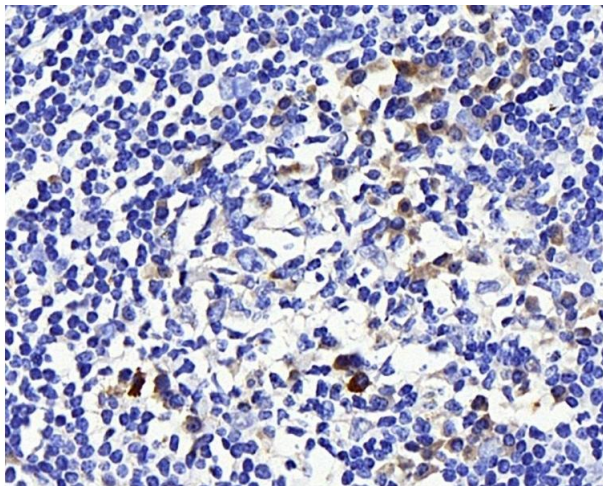
Buffer: PBS with 0.02 % sodium azide, 1 % BSA and 50 % glycerol, pH 7.4

Preservative: Sodium azide

Precaution of Use: This product contains Sodium azide: a POISONOUS AND HAZARDOUS SUBSTANCE which should be handled by trained staff only.

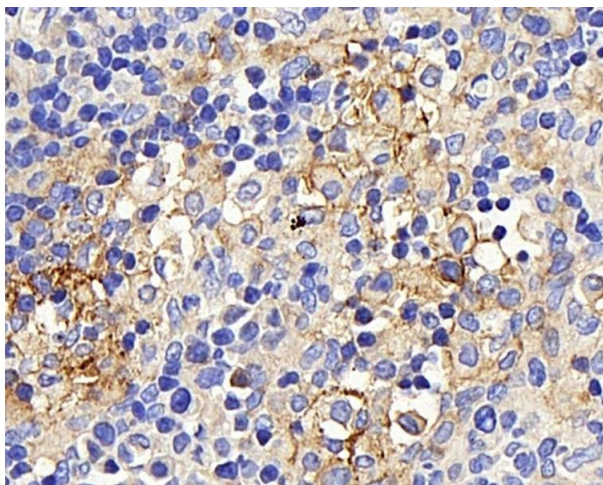
Storage: -20 °C

Storage Comment: Store at -20°C. Avoid freeze / thaw cycles.



#### Immunohistochemistry (Paraffin-embedded Sections)

**Image 1.** Immunohistochemistry analysis of paraffin-embedded human tonsil using CD169 Polyclonal Antibody at dilution of 1:300.



#### Immunohistochemistry (Paraffin-embedded Sections)

**Image 2.** Immunohistochemistry analysis of paraffin-embedded rat lymph node using CD169 Polyclonal Antibody at dilution of 1:300.