

Datasheet for ABIN7249630

**anti-TEK antibody**

## 4 Images

[Go to Product page](#)

## Overview

Quantity:	200 µL
Target:	TEK
Reactivity:	Human, Mouse, Rat
Host:	Rabbit
Clonality:	Polyclonal
Conjugate:	This TEK antibody is un-conjugated
Application:	Immunohistochemistry (IHC)

## Product Details

Immunogen:	KLH conjugated Synthetic peptide corresponding to Mouse Tie2
Isotype:	IgG
Characteristics:	Polyclonal Antibody
Purification:	Affinity purification

## Target Details

Target:	TEK
Alternative Name:	TEK ( <a href="#">TEK Products</a> )
Background:	The TEK receptor tyrosine kinase is expressed almost exclusively in endothelial cells in mice, rats, and humans. This receptor possesses a unique extracellular domain containing 2 immunoglobulin-like loops separated by 3 epidermal growth factor-like repeats that are connected to 3 fibronectin type III-like repeats. The ligand for the receptor is angiopoietin-1.

## Target Details

Defects in TEK are associated with inherited venous malformations, the TEK signaling pathway appears to be critical for endothelial cell-smooth muscle cell communication in venous morphogenesis. TEK is closely related to the TIE receptor tyrosine kinase.

UniProt: [Q02763](#), [Q02858](#)

Pathways: [RTK Signaling](#), [Growth Factor Binding](#)

## Application Details

Application Notes: IHC 1:200-1:800

Restrictions: For Research Use only

## Handling

Format: Liquid

Concentration: 470 µg/mL

Buffer: PBS with 0.02 % sodium azide, 1 % BSA and 50 % glycerol, pH 7.4

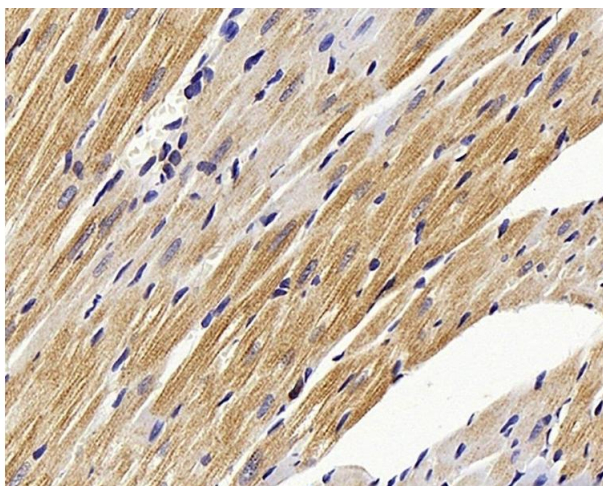
Preservative: Sodium azide

Precaution of Use: This product contains Sodium azide: a POISONOUS AND HAZARDOUS SUBSTANCE which should be handled by trained staff only.

Storage: -20 °C

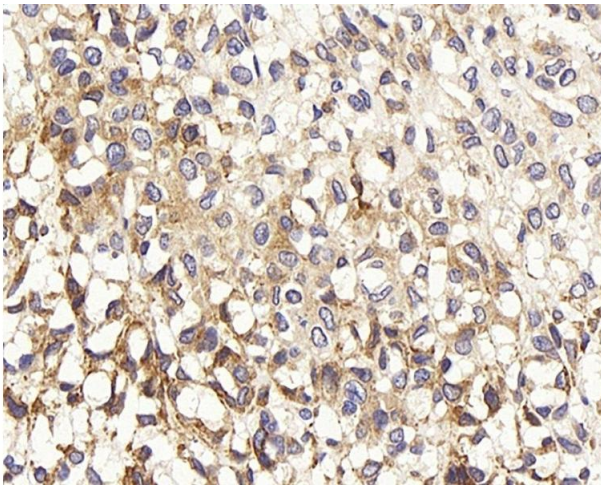
Storage Comment: Store at -20°C. Avoid freeze / thaw cycles.

## Images



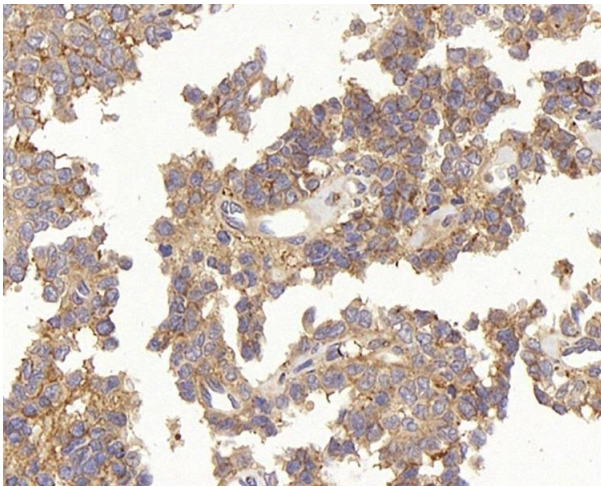
### Immunohistochemistry (Paraffin-embedded Sections)

**Image 1.** Immunohistochemistry analysis of paraffin-embedded Rat heart using TEK Polyclonal Antibody at dilution of 1:300.



#### Immunohistochemistry (Paraffin-embedded Sections)

**Image 2.** Immunohistochemistry analysis of paraffin-embedded human liver cancer using TEK Polyclonal Antibody at dilution of 1:200.



#### Immunohistochemistry (Paraffin-embedded Sections)

**Image 3.** Immunohistochemistry analysis of paraffin-embedded human stomach cancer using TEK Polyclonal Antibody at dilution of 1:200.

Please check the [product details page](#) for more images. Overall 4 images are available for ABIN7249630.