



Datasheet for ABIN7249634
anti-TSC22D3 antibody



[Go to Product page](#)

4 Images

Overview

Quantity:	200 µL
Target:	TSC22D3
Reactivity:	Mouse, Rat
Host:	Rabbit
Clonality:	Polyclonal
Conjugate:	This TSC22D3 antibody is un-conjugated
Application:	Immunohistochemistry (IHC)

Product Details

Immunogen:	KLH conjugated Synthetic peptide corresponding to Mouse GILZ
Isotype:	IgG
Characteristics:	Polyclonal Antibody
Purification:	Affinity purification

Target Details

Target:	TSC22D3
Alternative Name:	TSC22D3 (TSC22D3 Products)
Background:	The protein encoded by this gene shares significant sequence identity with the murine TSC-22 and Drosophila shs, both of which are leucine zipper proteins, that function as transcriptional regulators. The expression of this gene is stimulated by glucocorticoids and interleukin 10, and it appears to play a key role in the anti-inflammatory and immunosuppressive effects of this

Target Details

steroid and chemokine. Transcript variants encoding different isoforms have been identified for this gene.

UniProt: [Q9Z2S7](#), [Q9EQZ1](#)

Application Details

Application Notes: IHC 1:300-1:800

Restrictions: For Research Use only

Handling

Format: Liquid

Concentration: 410 µg/mL

Buffer: PBS with 0.02 % sodium azide, 1 % BSA and 50 % glycerol, pH 7.4

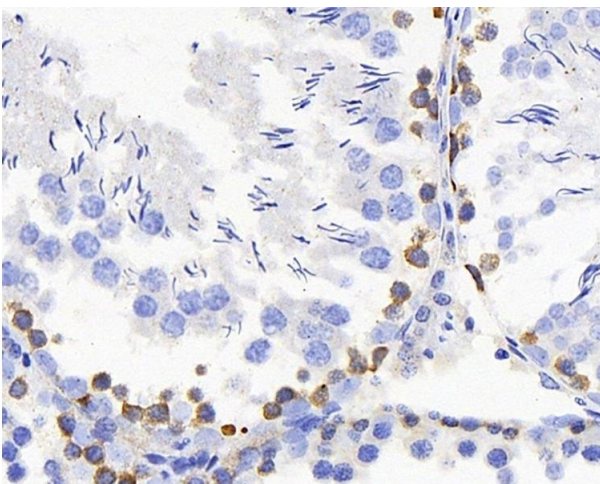
Preservative: Sodium azide

Precaution of Use: This product contains Sodium azide: a POISONOUS AND HAZARDOUS SUBSTANCE which should be handled by trained staff only.

Storage: -20 °C

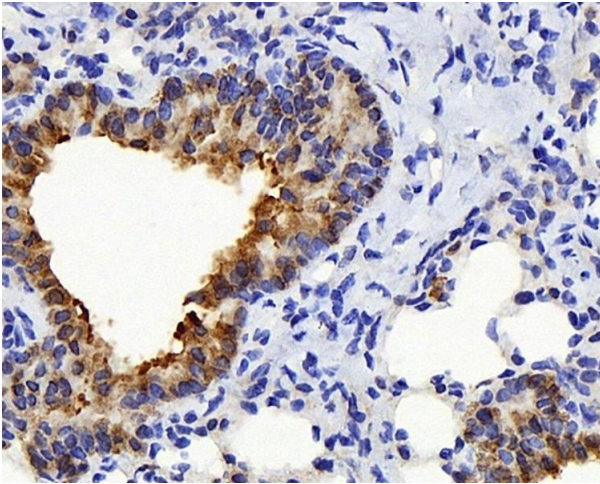
Storage Comment: Store at -20°C. Avoid freeze / thaw cycles.

Images



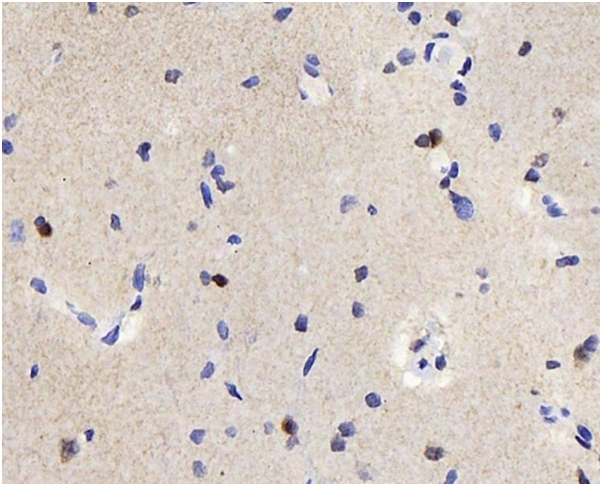
Immunohistochemistry (Paraffin-embedded Sections)

Image 1. Immunohistochemistry analysis of paraffin-embedded rat testis using TSC22D3 Polyclonal Antibody at dilution of 1:300.



Immunohistochemistry (Paraffin-embedded Sections)

Image 2. Immunohistochemistry analysis of paraffin-embedded mouse lung using TSC22D3 Polyclonal Antibody at dilution of 1:300.



Immunohistochemistry (Paraffin-embedded Sections)

Image 3. Immunohistochemistry analysis of paraffin-embedded rat brain using TSC22D3 Polyclonal Antibody at dilution of 1:300.

Please check the [product details page](#) for more images. Overall 4 images are available for ABIN7249634.