

Datasheet for ABIN7249640

**anti-NFKBIB antibody**

## 4 Images

[Go to Product page](#)

## Overview

Quantity:	200 µL
Target:	NFKBIB
Reactivity:	Human, Mouse, Rat
Host:	Rabbit
Clonality:	Polyclonal
Conjugate:	This NFKBIB antibody is un-conjugated
Application:	Immunohistochemistry (IHC)

## Product Details

Immunogen:	KLH conjugated Synthetic peptide corresponding to Mouse IKBbeta
Isotype:	IgG
Characteristics:	Polyclonal Antibody
Purification:	Affinity purification

## Target Details

Target:	NFKBIB
Alternative Name:	NFKBIB ( <a href="#">NFKBIB Products</a> )
Background:	The protein encoded by this gene belongs to the NF-kappa-B inhibitor family, which inhibit NF-kappa-B by complexing with, and trapping it in the cytoplasm. Phosphorylation of serine residues on these proteins by kinases marks them for destruction via the ubiquitination pathway, thereby allowing activation of the NF-kappa-B, which translocates to the nucleus to

## Target Details

function as a transcription factor. Alternatively spliced transcript variants have been found for this gene.

UniProt: [Q15653](#), [Q60778](#), [Q9JIA3](#)

Pathways: [NF-kappaB Signaling](#), [Activation of Innate immune Response](#), [Maintenance of Protein Location](#), [Toll-Like Receptors Cascades](#)

## Application Details

Application Notes: IHC 1:300

Restrictions: For Research Use only

## Handling

Format: Liquid

Concentration: 0.66 mg/mL

Buffer: PBS with 0.02 % sodium azide, 1 % BSA and 50 % glycerol, pH 7.4

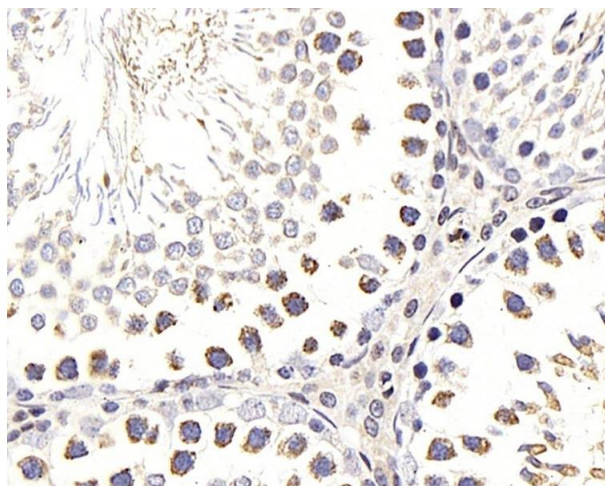
Preservative: Sodium azide

Precaution of Use: This product contains Sodium azide: a POISONOUS AND HAZARDOUS SUBSTANCE which should be handled by trained staff only.

Storage: -20 °C

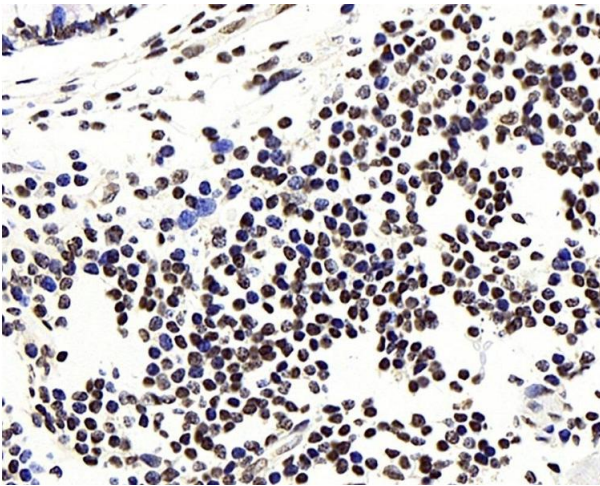
Storage Comment: Store at -20°C. Avoid freeze / thaw cycles.

## Images



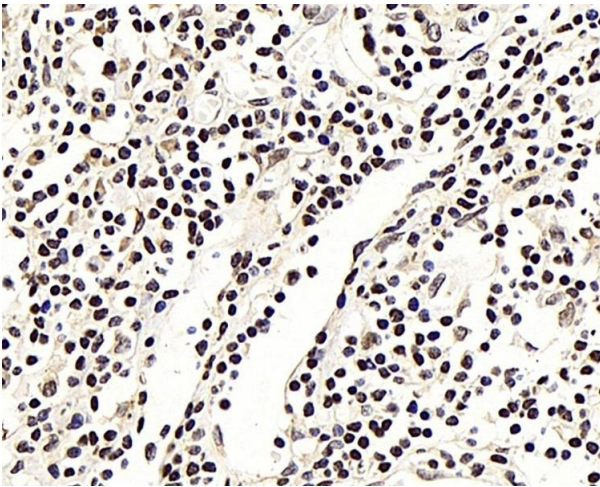
### Immunohistochemistry (Paraffin-embedded Sections)

**Image 1.** Immunohistochemistry analysis of paraffin-embedded Rat testis using NFKBIB Polyclonal Antibody at dilution of 1:300.



#### Immunohistochemistry (Paraffin-embedded Sections)

**Image 2.** Immunohistochemistry analysis of paraffin-embedded human colon using NFKB1B Polyclonal Antibody at dilution of 1:300.



#### Immunohistochemistry (Paraffin-embedded Sections)

**Image 3.** Immunohistochemistry analysis of paraffin-embedded human lung cancer using NFKB1B Polyclonal Antibody at dilution of 1:300.

Please check the [product details page](#) for more images. Overall 4 images are available for ABIN7249640.