

Datasheet for ABIN7249676

anti-DLL3 antibody



[Go to Product page](#)

1 Image

Overview

Quantity:	200 µL
Target:	DLL3
Reactivity:	Mouse, Rat
Host:	Rabbit
Clonality:	Polyclonal
Conjugate:	This DLL3 antibody is un-conjugated
Application:	Western Blotting (WB)

Product Details

Immunogen:	KLH conjugated Synthetic peptide corresponding to Mouse DLL3
Isotype:	IgG
Characteristics:	Polyclonal Antibody
Purification:	Affinity purification

Target Details

Target:	DLL3
Alternative Name:	DLL3 (DLL3 Products)
Background:	<p>This gene encodes a member of the delta protein ligand family. This family functions as Notch ligands that are characterized by a DSL domain, EGF repeats, and a transmembrane domain.</p> <p>Mutations in this gene cause autosomal recessive spondylocostal dysostosis 1. Two transcript variants encoding distinct isoforms have been identified for this gene.</p>

Target Details

Molecular Weight: Observed_MW: 65 kDa
Calculated_MW: 65 kDa

UniProt: [O88516](#), [O88671](#)

Pathways: [Notch Signaling](#)

Application Details

Application Notes: WB 1:500-1:2000

Restrictions: For Research Use only

Handling

Format: Liquid

Concentration: 0.7 mg/mL

Buffer: PBS with 0.02 % sodium azide, 1 % BSA and 50 % glycerol, pH 7.4

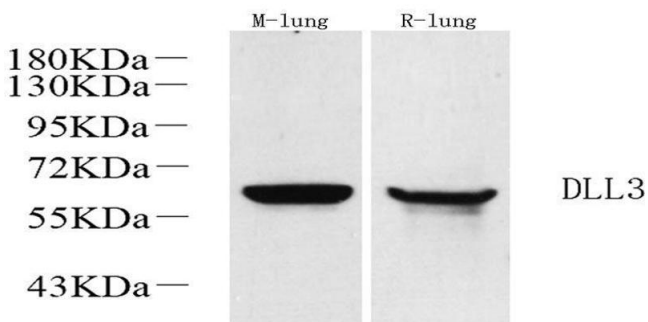
Preservative: Sodium azide

Precaution of Use: This product contains Sodium azide: a POISONOUS AND HAZARDOUS SUBSTANCE which should be handled by trained staff only.

Storage: -20 °C

Storage Comment: Store at -20°C. Avoid freeze / thaw cycles.

Images



Western Blotting

Image 1. Western Blot analysis of various samples using DLL3 Polyclonal Antibody at dilution of 1:1000.