



[Go to Product page](#)

Datasheet for ABIN7249678

## anti-DLL4 antibody

### 3 Images

#### Overview

Quantity:	200 µL
Target:	DLL4
Reactivity:	Mouse, Rat
Host:	Rabbit
Clonality:	Polyclonal
Conjugate:	This DLL4 antibody is un-conjugated
Application:	Immunohistochemistry (IHC)

#### Product Details

Immunogen:	KLH conjugated Synthetic peptide corresponding to Mouse DLL4
Isotype:	IgG
Characteristics:	Polyclonal Antibody
Purification:	Affinity purification

#### Target Details

Target:	DLL4
Alternative Name:	DLL4 ( <a href="#">DLL4 Products</a> )
Background:	This gene is a homolog of the Drosophila delta gene. The delta gene family encodes Notch ligands that are characterized by a DSL domain, EGF repeats, and a transmembrane domain.
UniProt:	<a href="#">Q9JI71</a> , <a href="#">D3ZHH1</a>

## Target Details

---

Pathways: [Notch Signaling](#)

## Application Details

---

Application Notes: IHC 1:200-1:500

Restrictions: For Research Use only

## Handling

---

Format: Liquid

Concentration: 260 µg/mL

Buffer: PBS with 0.02 % sodium azide, 1 % BSA and 50 % glycerol, pH 7.4

Preservative: Sodium azide

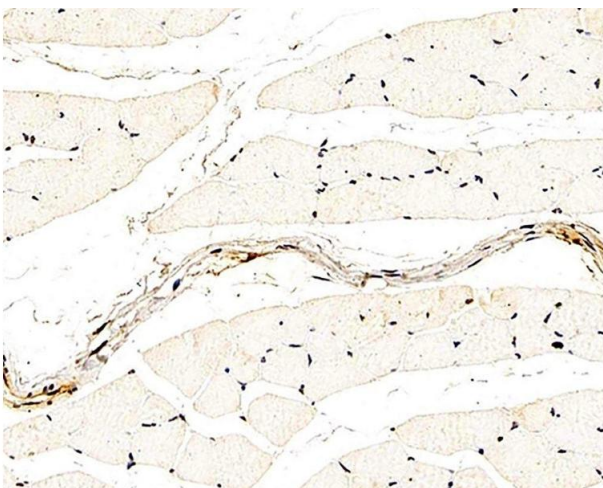
Precaution of Use: This product contains Sodium azide: a POISONOUS AND HAZARDOUS SUBSTANCE which should be handled by trained staff only.

Storage: -20 °C

Storage Comment: Store at -20°C. Avoid freeze / thaw cycles.

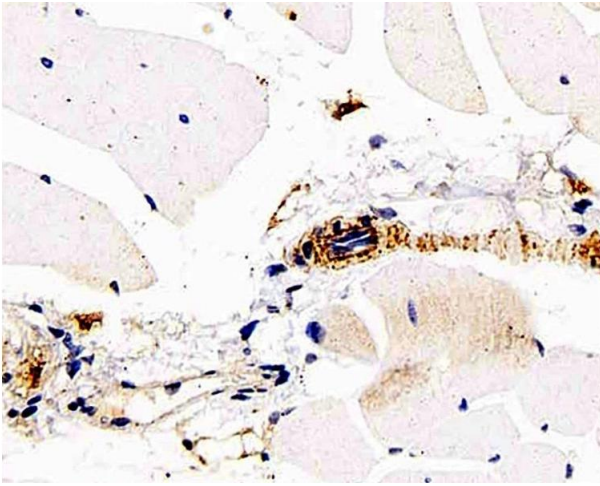
## Images

---



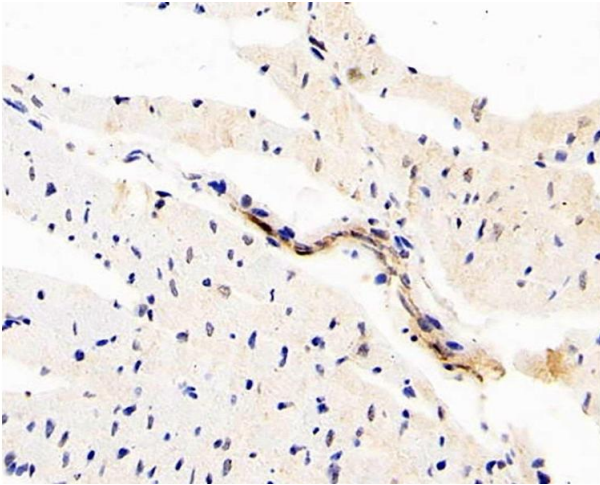
### Immunohistochemistry (Paraffin-embedded Sections)

**Image 1.** Immunohistochemistry analysis of paraffin-embedded rat skeletal muscle using DLL4 Polyclonal Antibody at dilution of 1:200.



#### Immunohistochemistry (Paraffin-embedded Sections)

**Image 2.** Immunohistochemistry analysis of paraffin-embedded mouse skeletal muscle using DLL4 Polyclonal Antibody at dilution of 1:200.



#### Immunohistochemistry (Paraffin-embedded Sections)

**Image 3.** Immunohistochemistry analysis of paraffin-embedded rat heart using DLL4 Polyclonal Antibody at dilution of 1:200.