



[Go to Product page](#)

Datasheet for ABIN7249706

## anti-c-FOS antibody

### 4 Images

#### Overview

Quantity:	200 µL
Target:	c-FOS (c-Fos)
Reactivity:	Human, Mouse, Rat
Host:	Mouse
Clonality:	Monoclonal
Conjugate:	This c-FOS antibody is un-conjugated
Application:	Western Blotting (WB), Immunohistochemistry (IHC), Immunofluorescence (IF)

#### Product Details

Immunogen:	KLH conjugated Synthetic peptide corresponding to Mouse c-FOS
Clone:	4B4F11
Isotype:	IgG
Characteristics:	Monoclonal Antibody
Purification:	Affinity purification

#### Target Details

Target:	c-FOS (c-Fos)
Alternative Name:	c-Fos ( <a href="#">c-Fos Products</a> )
Background:	The Fos gene family consists of 4 members: FOS, FOSB, FOSL1, and FOSL2. These genes encode leucine zipper proteins that can dimerize with proteins of the JUN family, thereby

## Target Details

---

forming the transcription factor complex AP-1. As such, the FOS proteins have been implicated as regulators of cell proliferation, differentiation, and transformation. In some cases, expression of the FOS gene has also been associated with apoptotic cell death.

Molecular Weight: Observed\_MW: 62 kDa  
Calculated\_MW: 62 kDa

UniProt: [P01100](#), [P01101](#), [P12841](#)

Pathways: [S100 Proteins](#)

## Application Details

---

Application Notes: WB 1:500-1:2000, IHC 1:500-1:2000, IF 1:200-1:1000

Restrictions: For Research Use only

## Handling

---

Format: Liquid

Concentration: 0.97 mg/mL

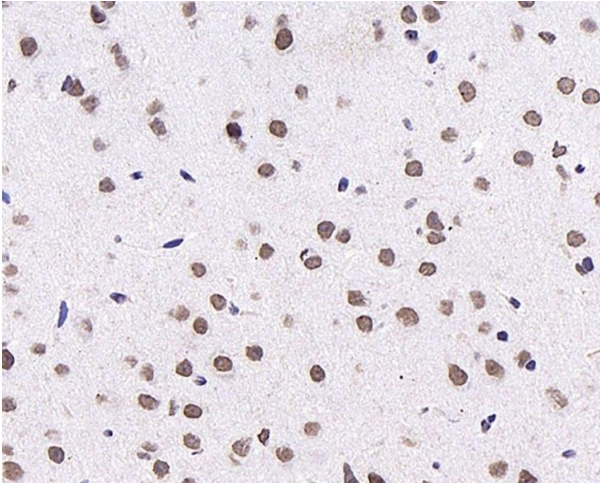
Buffer: PBS with 0.02 % sodium azide, 1 % BSA and 50 % glycerol, pH 7.4

Preservative: Sodium azide

Precaution of Use: This product contains Sodium azide: a POISONOUS AND HAZARDOUS SUBSTANCE which should be handled by trained staff only.

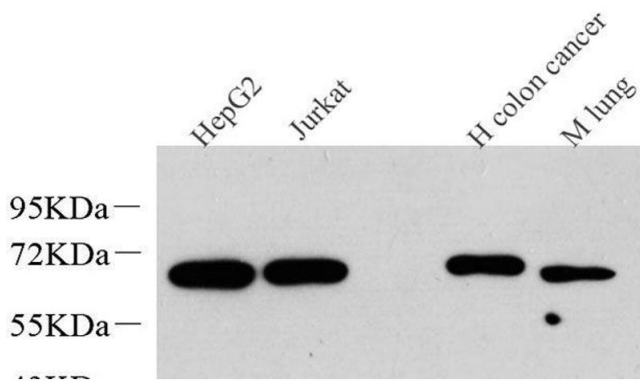
Storage: -20 °C

Storage Comment: Store at -20°C. Avoid freeze / thaw cycles.



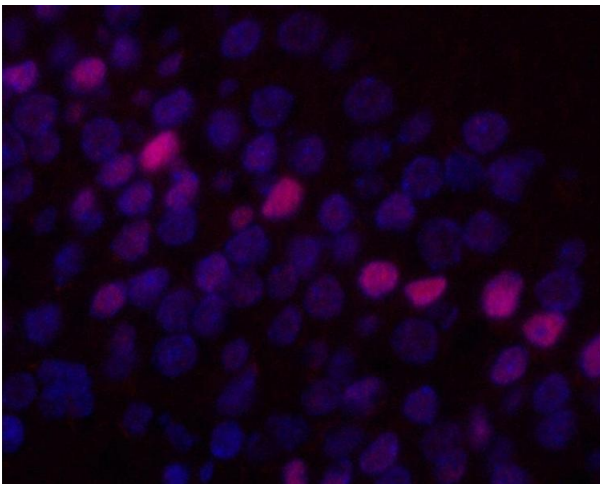
### Immunohistochemistry (Paraffin-embedded Sections)

**Image 1.** Immunohistochemistry analysis of paraffin-embedded mouse brain using c-Fos Monoclonal Antibody at dilution of 1:1000.



### Western Blotting

**Image 2.** Western Blot analysis of various samples using c-Fos Monoclonal Antibody at dilution of 1:1000.



### Immunofluorescence

**Image 3.** Immunofluorescence analysis of paraffin-embedded rat brain using c-Fos Monoclonal Antibody at dilution of 1:400.

Please check the [product details page](#) for more images. Overall 4 images are available for ABIN7249706.