



[Go to Product page](#)

Datasheet for ABIN7249720

anti-LYZ antibody

3 Images

Overview

Quantity:	200 µL
Target:	LYZ
Reactivity:	Mouse, Rat
Host:	Rabbit
Clonality:	Polyclonal
Conjugate:	This LYZ antibody is un-conjugated
Application:	Western Blotting (WB), Immunohistochemistry (IHC)

Product Details

Immunogen:	KLH conjugated Synthetic peptide corresponding to Mouse Lysozyme
Isotype:	IgG
Characteristics:	Polyclonal Antibody
Purification:	Affinity purification

Target Details

Target:	LYZ
Alternative Name:	Lysozyme (LYZ Products)
Background:	LYZ(Lysozyme C) is also named as LZM and belongs to the glycosyl hydrolase 22 family. It catalyzes the hydrolysis of the bacterial cell wall beta(1-4) glycosidic linkages between N-acetylmuramic acid and N-acetylglucosamine. In tissues and body fluids this protein is associated with the monocyte-macrophage system and enhance the activity of immunoagents.

Target Details

LYZ is capable of both hydrolysis and transglycosylation, it shows also a slight esterase activity. Defects in LYZ are a cause of amyloidosis type 8 (AMYL8). The full length protein has a signal peptide with 18 amino acid.

Molecular Weight: Observed_MW: 17 kDa
Calculated_MW: 17 kDa

UniProt: [P08905](#)

Application Details

Application Notes: WB 1:500-1:2000, IHC 1:300-1:800

Restrictions: For Research Use only

Handling

Format: Liquid

Concentration: 480 µg/mL

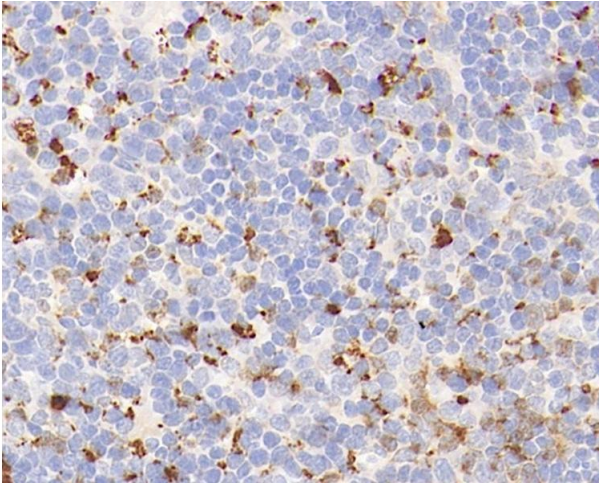
Buffer: PBS with 0.02 % sodium azide, 1 % BSA and 50 % glycerol, pH 7.4

Preservative: Sodium azide

Precaution of Use: This product contains Sodium azide: a POISONOUS AND HAZARDOUS SUBSTANCE which should be handled by trained staff only.

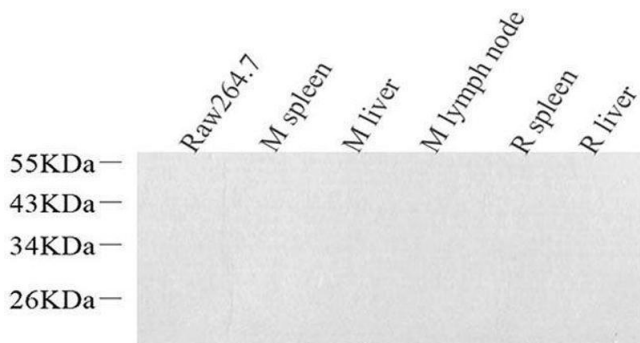
Storage: -20 °C

Storage Comment: Store at -20°C. Avoid freeze / thaw cycles.



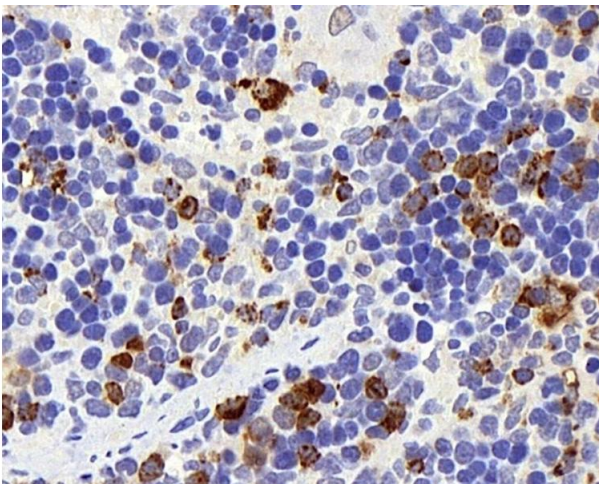
Immunohistochemistry (Paraffin-embedded Sections)

Image 1. Immunohistochemistry analysis of paraffin-embedded mouse spleen using Lysozyme Polyclonal Antibody at dilution of 1:400.



Western Blotting

Image 2. Western Blot analysis of various samples using Lysozyme Polyclonal Antibody at dilution of 1:1000.



Immunohistochemistry (Paraffin-embedded Sections)

Image 3. Immunohistochemistry analysis of paraffin-embedded rat spleen using Lysozyme Polyclonal Antibody at dilution of 1:400.