



[Go to Product page](#)

Datasheet for ABIN7249752  
**anti-beta Catenin antibody**

4 Images

### Overview

Quantity:	200 µL
Target:	beta Catenin (CATNB)
Reactivity:	Human, Mouse, Rat
Host:	Mouse
Clonality:	Monoclonal
Conjugate:	This beta Catenin antibody is un-conjugated
Application:	Western Blotting (WB), Immunohistochemistry (IHC)

### Product Details

Immunogen:	Recombinant protein corresponding to Mouse beta-catenin
Clone:	4A3H3
Isotype:	IgG
Characteristics:	Monoclonal Antibody
Purification:	Affinity purification

### Target Details

Target:	beta Catenin (CATNB)
Alternative Name:	Catenin beta ( <a href="#">CATNB Products</a> )
Background:	CTNNB1, also known as $\beta$ -Catenin, is an evolutionarily conserved, multifunctional intracellular protein. CTNNB1 was originally identified in cell adherens junctions (Ajs) where it functions to

## Target Details

---

bridge the cytoplasmic domain of cadherins to a-catenin and the actin cytoskeleton. Besides its essential role in the Ajs,CTNNB1 is also a key downstream component of the canonical Wnt pathway that plays diverse and critical roles in embryonic development and adult tissue homeostasis. Deregulation of CTNNB1 activity is associated with multiple diseases including cancers. .

Molecular Weight: Observed\_MW: 92 kDa  
Calculated\_MW: 92 kDa

UniProt: [P35222](#), [Q02248](#), [Q9WU82](#)

Pathways: [Peptide Hormone Metabolism](#)

## Application Details

---

Application Notes: WB 1:500-1:1000, IHC 1:100-1:500

Restrictions: For Research Use only

## Handling

---

Format: Liquid

Concentration: 420 µg/mL

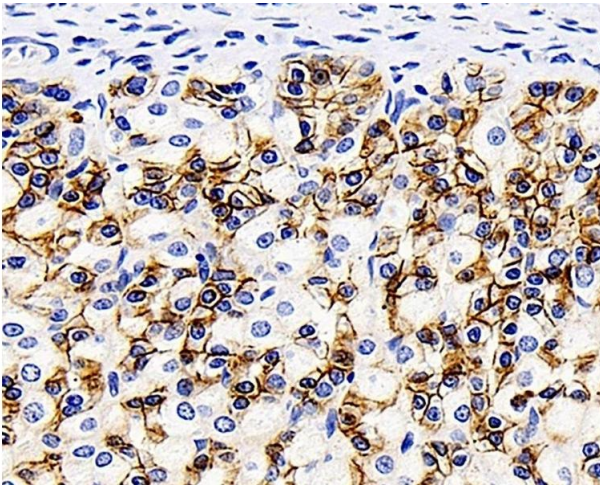
Buffer: PBS with 0.02 % sodium azide, 1 % BSA and 50 % glycerol, pH 7.4

Preservative: Sodium azide

Precaution of Use: This product contains Sodium azide: a POISONOUS AND HAZARDOUS SUBSTANCE which should be handled by trained staff only.

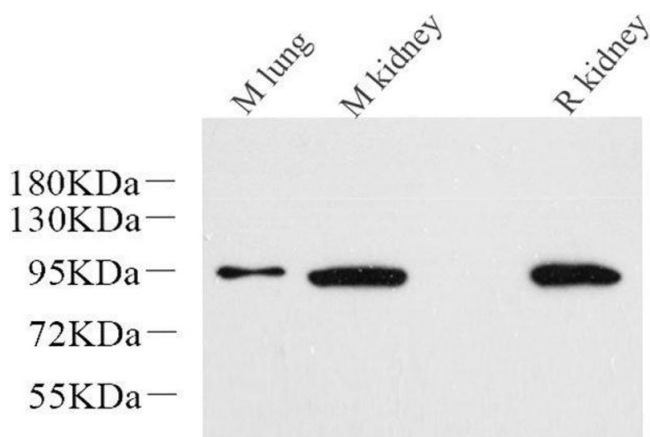
Storage: -20 °C

Storage Comment: Store at -20°C. Avoid freeze / thaw cycles.



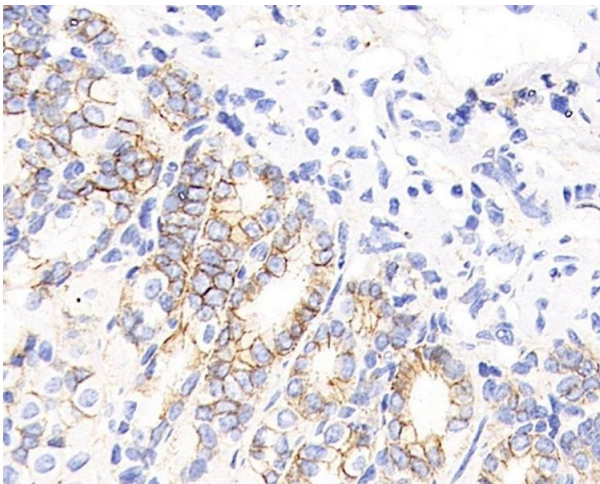
#### Immunohistochemistry (Paraffin-embedded Sections)

**Image 1.** Immunohistochemistry analysis of paraffin-embedded Rat stomach using Catenin beta Monoclonal Antibody at dilution of 1:200.



#### Western Blotting

**Image 2.** Western Blot analysis of various samples using Catenin beta Monoclonal Antibody at dilution of 1:1000.



#### Immunohistochemistry (Paraffin-embedded Sections)

**Image 3.** Immunohistochemistry analysis of paraffin-embedded mouse stomach using Catenin beta Monoclonal Antibody at dilution of 1:200.

Please check the [product details page](#) for more images. Overall 4 images are available for ABIN7249752.