

Datasheet for ABIN7249766

anti-BRAF antibody

3 Images

[Go to Product page](#)

Overview

Quantity:	200 µL
Target:	BRAF
Reactivity:	Mouse, Rat
Host:	Rabbit
Clonality:	Polyclonal
Conjugate:	This BRAF antibody is un-conjugated
Application:	Immunohistochemistry (IHC)

Product Details

Immunogen:	KLH conjugated Synthetic peptide corresponding to Mouse B-Ra
Isotype:	IgG
Characteristics:	Polyclonal Antibody
Purification:	Affinity purification

Target Details

Target:	BRAF
Alternative Name:	BRAF (BRAF Products)
Background:	<p>This gene encodes a protein belonging to the raf/mil family of serine/threonine protein kinases. This protein plays a role in regulating the MAP kinase/ERKs signaling pathway, which affects cell division, differentiation, and secretion. Mutations in this gene are associated with cardiofaciocutaneous syndrome, a disease characterized by heart defects, mental retardation</p>

Target Details

and a distinctive facial appearance. Mutations in this gene have also been associated with various cancers, including non-Hodgkin lymphoma, colorectal cancer, malignant melanoma, thyroid carcinoma, non-small cell lung carcinoma, and adenocarcinoma of lung. A pseudogene, which is located on chromosome X, has been identified for this gene.

UniProt: [P28028](#)

Pathways: [MAPK Signaling](#), [RTK Signaling](#), [Neurotrophin Signaling Pathway](#), [Ribonucleoprotein Complex Subunit Organization](#), [Hepatitis C](#), [Autophagy](#)

Application Details

Application Notes: IHC 1:200-1:800

Restrictions: For Research Use only

Handling

Format: Liquid

Concentration: 0.74 mg/mL

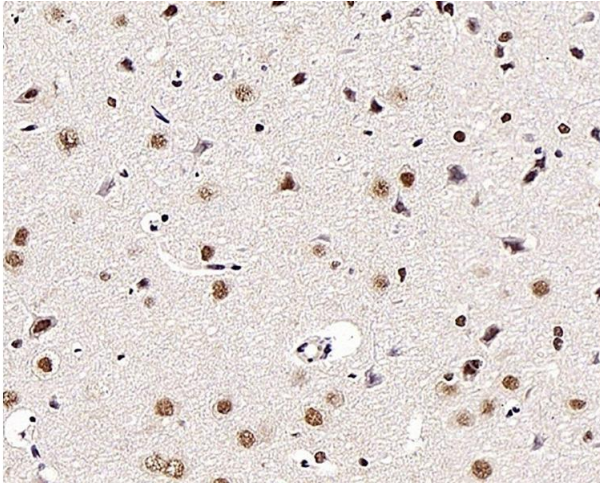
Buffer: PBS with 0.02 % sodium azide, 1 % BSA and 50 % glycerol, pH 7.4

Preservative: Sodium azide

Precaution of Use: This product contains Sodium azide: a POISONOUS AND HAZARDOUS SUBSTANCE which should be handled by trained staff only.

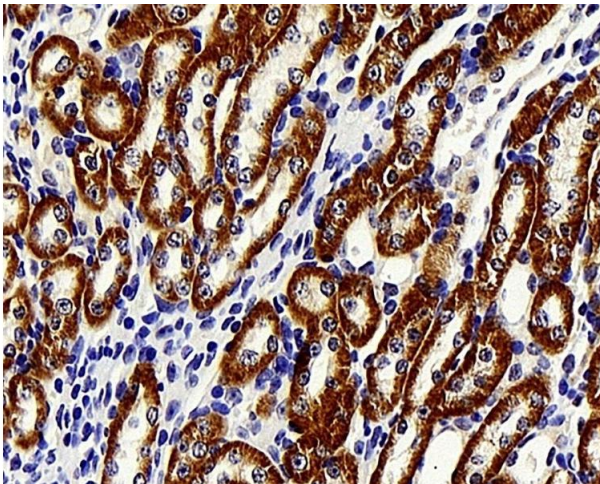
Storage: -20 °C

Storage Comment: Store at -20°C. Avoid freeze / thaw cycles.



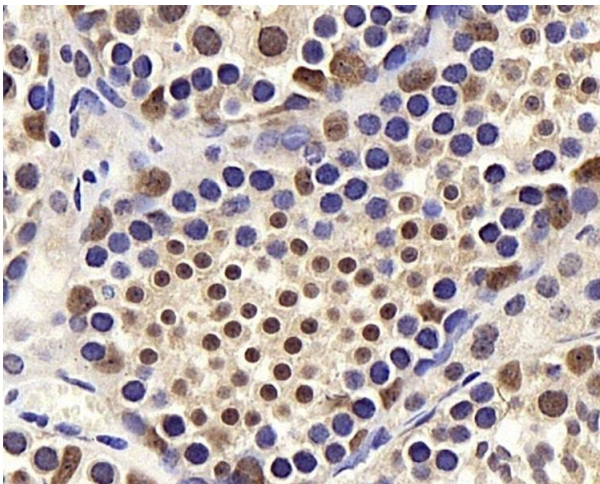
Immunohistochemistry (Paraffin-embedded Sections)

Image 1. Immunohistochemistry analysis of paraffin-embedded rat brain using BRAF Polyclonal Antibody at dilution of 1:300.



Immunohistochemistry (Paraffin-embedded Sections)

Image 2. Immunohistochemistry analysis of paraffin-embedded mouse kidney using BRAF Polyclonal Antibody at dilution of 1:400.



Immunohistochemistry (Paraffin-embedded Sections)

Image 3. Immunohistochemistry analysis of paraffin-embedded mouse testis using BRAF Polyclonal Antibody at dilution of 1:400.