

Datasheet for ABIN7249788

anti-BrdU antibody

2 Images



[Go to Product page](#)

Overview

Quantity:	200 µL
Target:	BrdU
Reactivity:	Human, Mouse, Rat
Host:	Mouse
Clonality:	Monoclonal
Conjugate:	This BrdU antibody is un-conjugated
Application:	Immunohistochemistry (IHC), Immunofluorescence (IF)

Product Details

Immunogen:	KLH conjugated BrdU
Clone:	4B6C12
Isotype:	IgG
Characteristics:	Monoclonal Antibody
Purification:	Affinity purification

Target Details

Target:	BrdU
Alternative Name:	BrdU (BrdU Products)
Target Type:	Chemical
Background:	Bromodeoxyuridine (5-bromo-2'-deoxyuridine, BrdU, BUdR, BrdUrd) is a synthetic nucleoside

Target Details

that is an analog of thymidine. It can be incorporated into the newly synthesized DNA of replicating cells (during the S phase of the cell cycle), substituting for thymidine during DNA replication. As such, BrdU is used for birth dating and monitoring cell proliferation. BrdU is a toxic and mutagenic substance. It triggers cell death, the formation of teratomas, alters DNA stability, lengthens the cell cycle, and has mitogenic, transcriptional and translational effects on cells that incorporate it.

Application Details

Application Notes: IHC 1:100-1:500, IF 1:100-1:500

Restrictions: For Research Use only

Handling

Format: Liquid

Concentration: 0.7 mg/mL

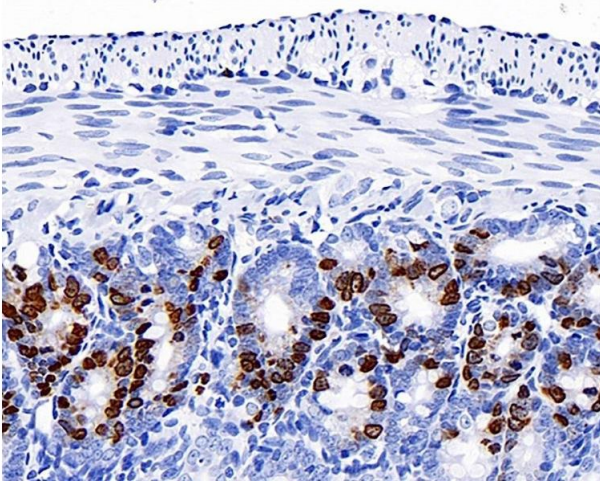
Buffer: PBS with 0.02 % sodium azide, 1 % BSA and 50 % glycerol, pH 7.4

Preservative: Sodium azide

Precaution of Use: This product contains Sodium azide: a POISONOUS AND HAZARDOUS SUBSTANCE which should be handled by trained staff only.

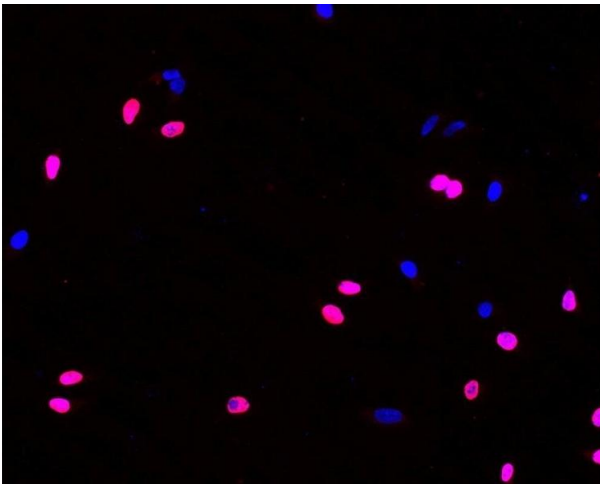
Storage: -20 °C

Storage Comment: Store at -20°C. Avoid freeze / thaw cycles.



Immunohistochemistry (Paraffin-embedded Sections)

Image 1. Immunohistochemistry analysis of paraffin-embedded mouse jejunum (intraperitoneal injection BrdU every 2 hours for 4 times) using BrdU Monoclonal Antibody at dilution of 1:300.



Immunofluorescence

Image 2. Immunofluorescence analysis of HeLa cells (treated with 0.03 mg/mL BrdU for 40 min) using BrdU Monoclonal Antibody at dilution of 1:100.