



[Go to Product page](#)

Datasheet for ABIN7249792
anti-MAGEC1 antibody

2 Images

Overview

| | |
|--------------|---------------------------------------|
| Quantity: | 200 µL |
| Target: | MAGEC1 |
| Reactivity: | Rat, Mouse |
| Host: | Rabbit |
| Clonality: | Polyclonal |
| Conjugate: | This MAGEC1 antibody is un-conjugated |
| Application: | Immunohistochemistry (IHC) |

Product Details

| | |
|------------------|--|
| Immunogen: | KLH conjugated Synthetic peptide corresponding to Mouse Aggrecan |
| Isotype: | IgG |
| Characteristics: | Polyclonal Antibody |
| Purification: | Affinity purification |

Target Details

| | |
|-------------------|--|
| Target: | MAGEC1 |
| Alternative Name: | MAGEC1 (MAGEC1 Products) |
| Background: | This gene is a member of the melanoma antigen gene (MAGE) family. The proteins of this family are tumor-specific antigens that can be recognized by autologous cytolytic T lymphocytes. This protein contains a large number of unique short repetitive sequences in front of the MAGE-homologous sequence, and therefore is about 800 aa longer than the other MAGE |

Target Details

proteins.

UniProt: [Q61282](#)

Application Details

Application Notes: IHC 1:200-1:800

Restrictions: For Research Use only

Handling

Format: Liquid

Concentration: 0.65 mg/mL

Buffer: PBS with 0.02 % sodium azide, 1 % BSA and 50 % glycerol, pH 7.4

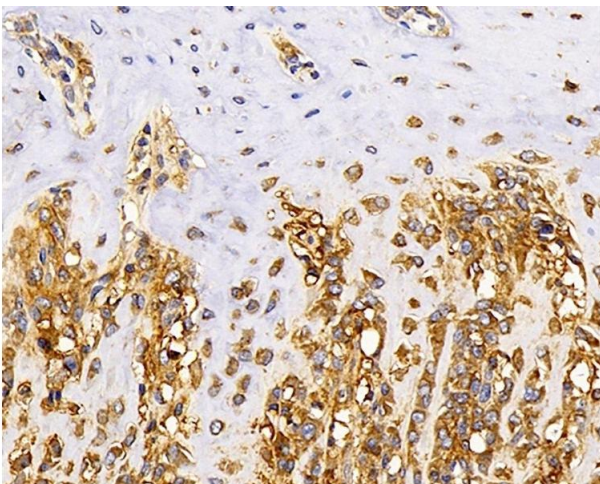
Preservative: Sodium azide

Precaution of Use: This product contains Sodium azide: a POISONOUS AND HAZARDOUS SUBSTANCE which should be handled by trained staff only.

Storage: -20 °C

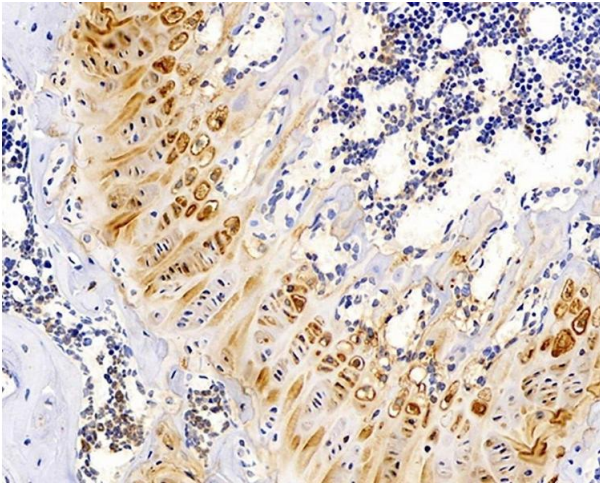
Storage Comment: Store at -20°C. Avoid freeze / thaw cycles.

Images



Immunohistochemistry (Paraffin-embedded Sections)

Image 1. Immunohistochemistry analysis of paraffin-embedded rat bone using MAGEC1 Polyclonal Antibody at dilution of 1:300.



Immunohistochemistry (Paraffin-embedded Sections)

Image 2. Immunohistochemistry analysis of paraffin-embedded mouse bone using MAGEC1 Polyclonal Antibody at dilution of 1:300.