

Datasheet for ABIN7249818

anti-MBP antibody

3 Images

[Go to Product page](#)

Overview

Quantity:	200 µL
Target:	MBP
Reactivity:	Rat, Mouse
Host:	Rabbit
Clonality:	Polyclonal
Conjugate:	This MBP antibody is un-conjugated
Application:	Western Blotting (WB), Immunohistochemistry (IHC)

Product Details

Immunogen:	KLH conjugated Synthetic peptide corresponding to Mouse Myelin Basic Protein
Isotype:	IgG
Characteristics:	Polyclonal Antibody
Purification:	Affinity purification

Target Details

Target:	MBP
Abstract:	MBP Products
Background:	<p>MBP belongs to the myelin basic protein family. The classic group of MBP isoforms (isoform 4-isoform 14) are the most abundant protein components of the myelin membrane in the CNS.</p> <p>They have a role in both its formation and stabilization. The smaller isoforms might have an important role in remyelination of denuded axons in multiple sclerosis. The non-classic group of</p>

Target Details

MBP isoforms (isoform 1-isoform 3/Golli-MBPs) may preferentially have a role in the early developing brain long before myelination, maybe as components of transcriptional complexes, and may also be involved in signaling pathways in T-cells and neural cells. MBP has six isoforms. Catalog#10458-1-AP is capable of recognizing multiple isoforms of MBP.

Molecular Weight: Observed_MW: 17-22 kDa
Calculated_MW: 17-22 kDa

UniProt: [P04370](#), [P02688](#)

Application Details

Application Notes: WB 1:500-1:1000, IHC 1:200-1:600

Restrictions: For Research Use only

Handling

Format: Liquid

Concentration: 300 µg/mL

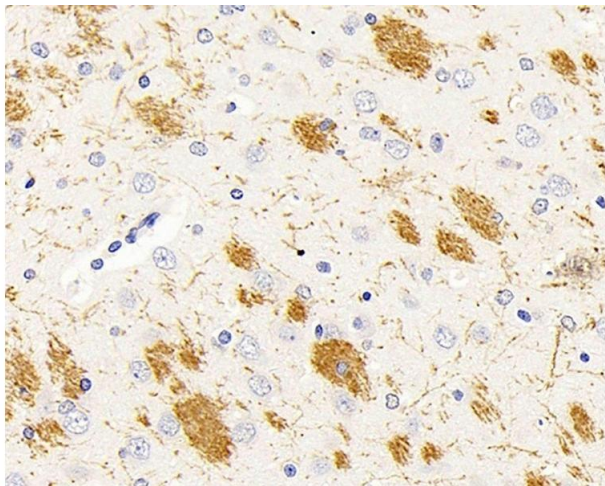
Buffer: PBS with 0.02 % sodium azide, 1 % BSA and 50 % glycerol, pH 7.4

Preservative: Sodium azide

Precaution of Use: This product contains Sodium azide: a POISONOUS AND HAZARDOUS SUBSTANCE which should be handled by trained staff only.

Storage: -20 °C

Storage Comment: Store at -20°C. Avoid freeze / thaw cycles.



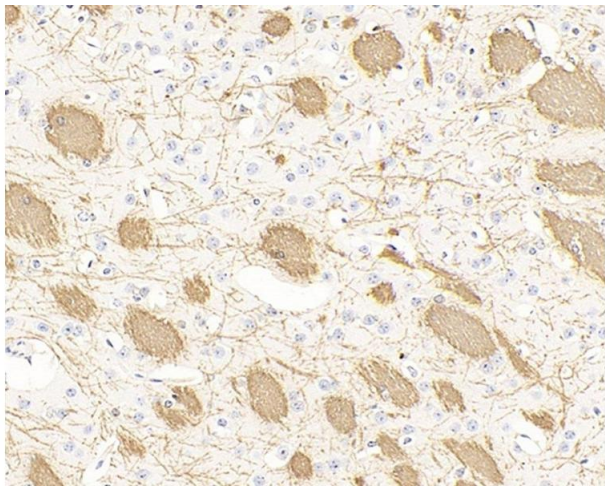
Immunohistochemistry (Paraffin-embedded Sections)

Image 1. Immunohistochemistry analysis of paraffin-embedded rat brain using MBP Polyclonal Antibody at dilution of 1:500.



Western Blotting

Image 2. Western Blot analysis of various samples using MBP Polyclonal Antibody at dilution of 1:1000.



Immunohistochemistry (Paraffin-embedded Sections)

Image 3. Immunohistochemistry analysis of paraffin-embedded mouse brain using MBP Polyclonal Antibody at dilution of 1:300.