

Datasheet for ABIN7249848

**anti-s100a4 antibody**

## 4 Images

[Go to Product page](#)

## Overview

Quantity:	200 µL
Target:	s100a4 (S100A4)
Reactivity:	Human, Mouse, Rat
Host:	Rabbit
Clonality:	Polyclonal
Conjugate:	This s100a4 antibody is un-conjugated
Application:	Western Blotting (WB), Immunohistochemistry (IHC)

## Product Details

Immunogen:	Recombinant protein corresponding to Mouse S100A4
Isotype:	IgG
Characteristics:	Polyclonal Antibody
Purification:	Affinity purification

## Target Details

Target:	s100a4 (S100A4)
Alternative Name:	S100A4 ( <a href="#">S100A4 Products</a> )
Background:	S100A4 is a member of the S100 family of calcium-binding proteins. The S100 family members have been involved in the regulation of a number of cellular processes such as cell cycle progression and differentiation. S100A4 is known to localize to and function in the nucleus, cytoplasm of cells and the extracellular space. S100A4 has also been shown to be associated

## Target Details

with tumor growth, motility, invasion, metastasis, angiogenesis, apoptosis and chemoresistance. It is a fibroblast-specific protein associated with mesenchymal cell morphology and motility, is expressed during epithelial-mesenchymal transformations (EMT) in vivo. It is an improved marker for lung fibroblasts that could be useful for investigating the pathogenesis of pulmonary fibrosis. Overexpression of S100A4 is correlated with a worse prognosis in patients with various types of cancer.

Molecular Weight: Observed\_MW: 12 kDa  
Calculated\_MW: 12 kDa

UniProt: [P26447](#), [P07091](#), [P05942](#)

Pathways: [S100 Proteins](#)

## Application Details

Application Notes: WB 1:500-1:2000, IHC 1:300-1:800

Restrictions: For Research Use only

## Handling

Format: Liquid

Concentration: 0.75 mg/mL

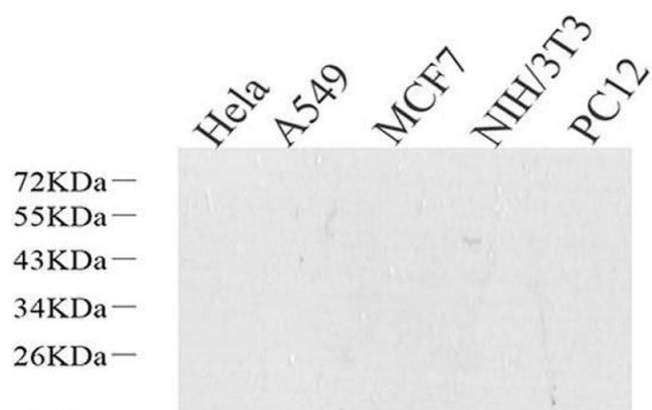
Buffer: PBS with 0.02 % sodium azide, 1 % BSA and 50 % glycerol, pH 7.4

Preservative: Sodium azide

Precaution of Use: This product contains Sodium azide: a POISONOUS AND HAZARDOUS SUBSTANCE which should be handled by trained staff only.

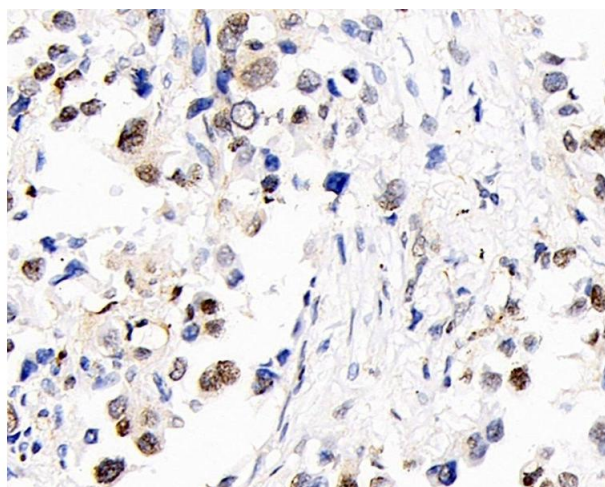
Storage: -20 °C

Storage Comment: Store at -20°C. Avoid freeze / thaw cycles.



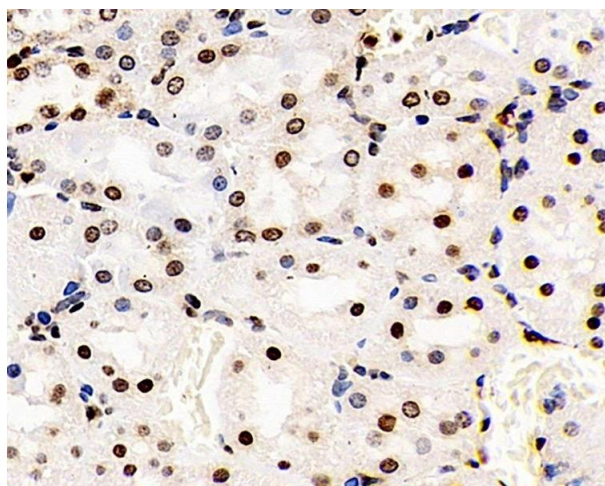
#### Western Blotting

**Image 1.** Western Blot analysis of various samples using S100A4 Polyclonal Antibody at dilution of 1:600.



#### Immunohistochemistry (Paraffin-embedded Sections)

**Image 2.** Immunohistochemistry analysis of paraffin-embedded human lung cancer using S100A4 Polyclonal Antibody at dilution of 1:400.



#### Immunohistochemistry (Paraffin-embedded Sections)

**Image 3.** Immunohistochemistry analysis of paraffin-embedded Rat kidney using S100A4 Polyclonal Antibody at dilution of 1:400.

Please check the [product details page](#) for more images. Overall 4 images are available for ABIN7249848.